



PARTNERSHIP
FOR
ECONOMIC
INCLUSION



THE WORLD BANK
IBRD · IDA | WORLD BANK GROUP

Partnership for
Economic Inclusion

ANNUAL REPORT

2022



MESSAGE FROM MICHAL RUTKOWSKI



On behalf of the World Bank's Social Protection and Jobs Global Practice and the Partnership for Economic Inclusion (PEI) funding partners, welcome to the Partnership for Economic Inclusion Annual Report 2022.

Fiscal 2022 will be remembered as a period of significant global challenge. As COVID-19 continued, the world grappled with the fall-out of overlapping crises, climate change, and price instability.

Extremely poor and vulnerable people continue to be the most severely impacted. As governments consider viable options to address extreme poverty, the scale-up of economic inclusion programs is as critical as ever.

Against this backdrop, PEI has much to be proud of. This fiscal year marked an important inflection point, with PEI maturing as a global entity with a growing reputation for influence and impact. PEI's 2022 Engagement Survey reports some striking accomplishments on this front. Ninety-five percent of respondents highlighted that PEI was impacting country programming, policy, and strategy on the scale-up of economic inclusion for the poorest. This year's Annual Report unpacks how these achievements were made.

During 2022, PEI consolidated a portfolio of over 40 national governments with a combination of grants and technical advisory services to their country programs, building on country investments in social protection, jobs, and livelihoods. In turn, PEI's country engagement work is driving the generation of learning and evidence, resulting in an impressive suite of open-access knowledge, data, and evaluation.

PEI has now emerged as a unique global platform with a growing policy reach. During fiscal 2022, a remarkable example of influence was the agreement of the first-ever World Bank Policy Commitment on Gender and Economic Inclusion. This policy will help countries launch and scale economic inclusion programs, which can support women to build resilient skills and knowledge for sustainable livelihoods.

All of PEI's work is built on dynamic partnerships and alliances, with PEI engaging over 500 organizations this year alone. At the heart of our outreach, the active engagement of Technical Partners, the Advisory Council, and the Steering Committee remains key. This year's Annual Report draws special attention to these relationships and the power of a winning coalition.

Although we are proud of our accomplishments, our work is far from done. As PEI moves to a second phase of operations from fiscal 2022 to fiscal 2026, new realities emerge. Moving into fiscal 2023, PEI will accelerate efforts for climate resilience and green recovery, with women's economic empowerment as a key focus. An urgent agenda on evidence and open-access data remains.

It is with sincere gratitude and appreciation for our extraordinary partnership that we thank you for your continued support to and engagement with PEI.

Sincerely,

A handwritten signature in black ink, appearing to read 'Michal Rutkowski', written over a thin horizontal line.

Michal Rutkowski, Global Director for Social Protection and Jobs

CONTENTS

4 2022 Impact

Snapshot of Achievements in Fiscal 2022.....	4
A Stronger Global Network	5
A Strategic Portfolio of Government-Led Programs.....	6
A Commitment to Women’s Economic Empowerment.....	7
PEI Engagement Survey 2022	8

9 Result Area Reports

PEI Delivers Results through Three Result Areas.....	9
Result Area 1: Country Engagement	10
Result Area 2: Evidence and Learning	22
Result Area 3: Partnerships and Alliances.....	31

39 Moving Forward into 2023

43 Additional Resources

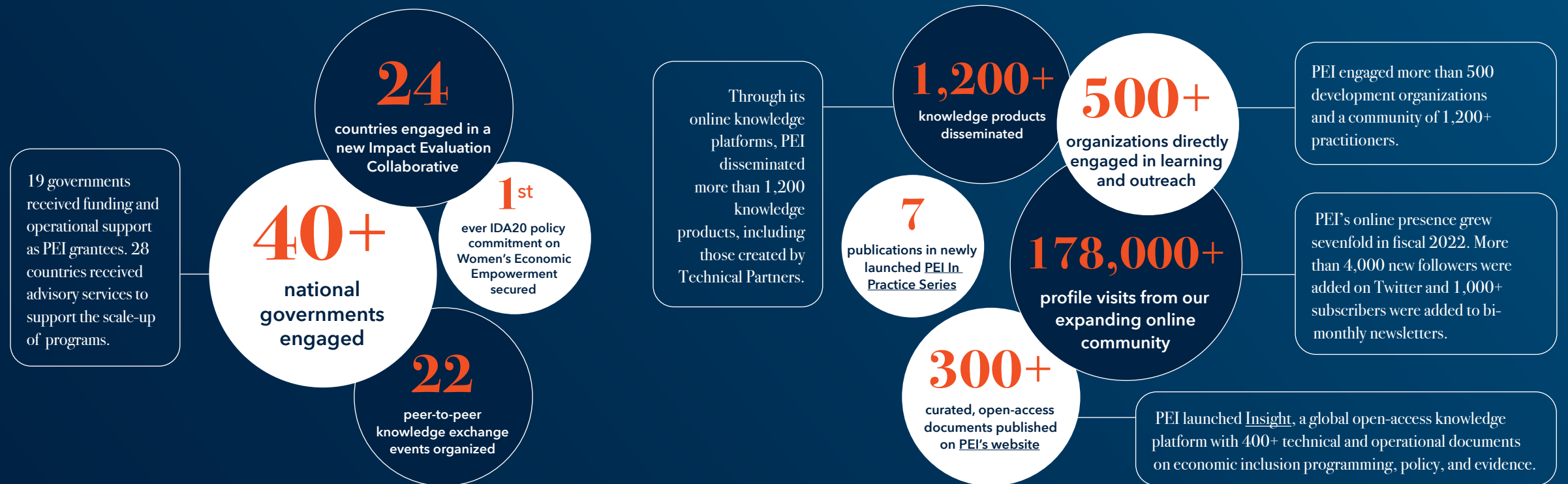
44 Annexes

Results Framework.....	44
PEI Theory of Change.....	50
Individual Grants Status.....	51
Financial Highlights	58
Abbreviations	63



2022 Impact

Snapshot of Achievements in Fiscal 2022



A Stronger Global Network

Fiscal 2022 marked PEI's transition from a startup to a maturing partnership with strong experience among its diverse constituencies. PEI's global network includes direct engagement with 500+ national governments, funding partners, Technical Partners (including UN agencies, NGO implementers and service providers, and research and advocacy organizations), and other affiliated groups and stakeholder organizations that work on issues of economic inclusion.

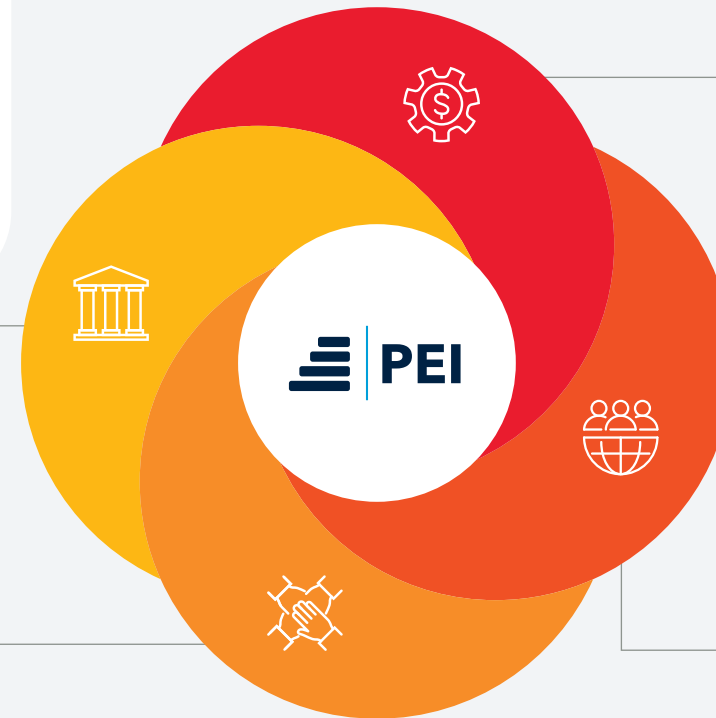
PEI engages these diverse partners to catalyze country-level innovation and to create and share global public goods that support the economic inclusion of the poorest.

NATIONAL GOVERNMENTS

PEI is directly engaged with 40+ of the growing number of governments around the world active in researching, planning, or implementing economic inclusion programs.

AFFILIATES AND BROADER STAKEHOLDERS

In 2022, PEI engaged over 300 organizations and networks, including organizations represented within the Leadership Collaborative to End Ultra-Poverty, the Africa Cash Transfers Community of Practice, the Poverty Alleviation Coalition, the Social Protection Hub, and other stakeholders.



FUNDING PARTNERS

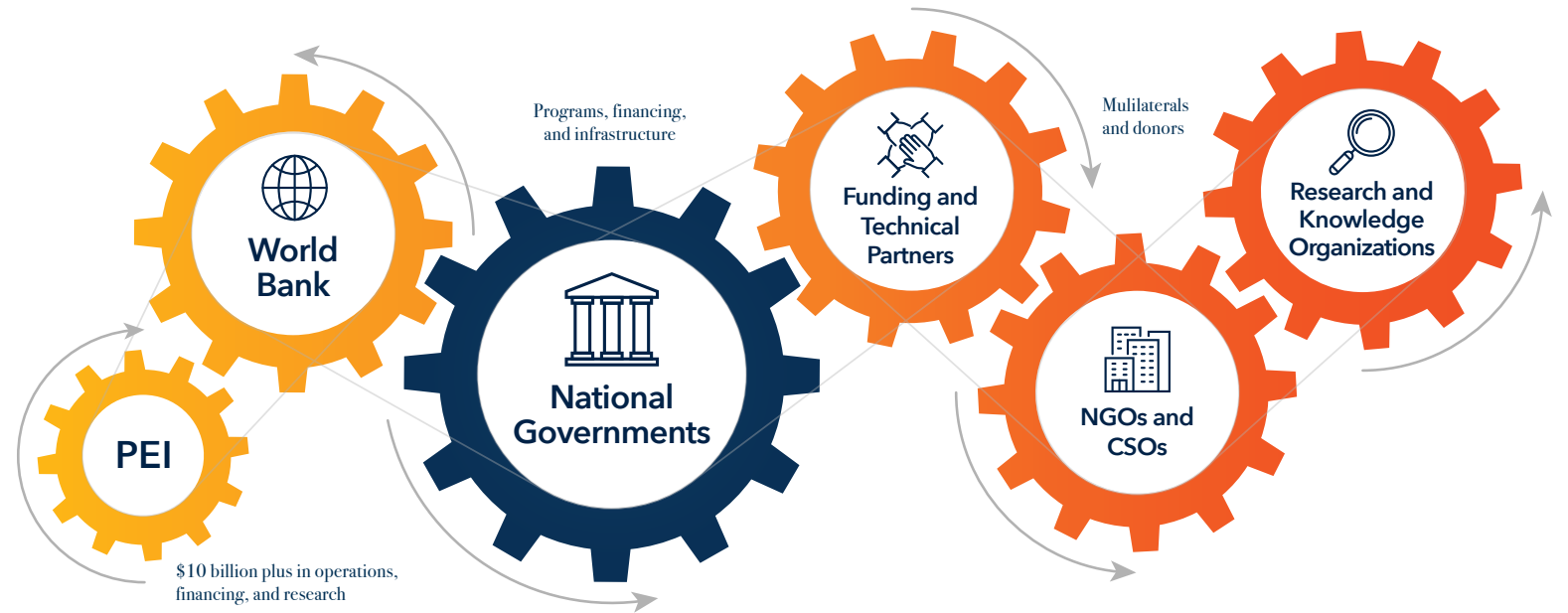


12 TECHNICAL PARTNERS

actively support PEI in achieving its mission.

A Strategic Portfolio of Government-Led Programs

Leveraging World Bank Financing, Government Investments, and Global Expertise



This year saw the effects of the global pandemic compounded by the impact of climate change in many areas and rising prices of food and inputs the world over. For the poorest and most vulnerable, these exacerbated realities require coordinated responses, building on existing programs and leveraging additional investments and expertise. Economic inclusion interventions are fast becoming a critical instrument in many governments' large-scale anti-poverty programming. PEI's The State of Economic Inclusion Report 2021 identified economic inclusion programs that are focused on the extreme poor and vulnerable in 75 countries, with 219 programs that reach over 90 million beneficiaries. In 2022, PEI provided grant support and technical advisory services in 34 country operations.

Three complementary drivers – scale, leverage, and partnership – underpin PEI's unique value proposition and potential to advance global economic inclusion.

- **Scale:** PEI supports national governments that are advancing a range of anti-poverty programming, ensuring there is always a view towards scale and national reach.
- **Leverage:** PEI leverages World Bank financing and investments in country operations, especially linked to foundational Social Protection and Jobs programming.
- **Partnership:** PEI draws on global expertise and collaborates with diverse stakeholders to meet the challenge of economic inclusion at scale.

A Commitment to Women's Economic Empowerment

The year saw game-changing advances in policy and programming on Women's Economic Empowerment – a cross-cutting priority under the partnership.

Policy Influence

For the first time, the World Bank issued a [Policy Commitment on Gender and Economic Inclusion](#), which was made possible by learning from PEI grantees and the engagement of PEI partners, including the Leadership Collaborative to End Ultra-Poverty. Read more in [PEI Results: Partnerships and Alliances](#).

Programming Impact

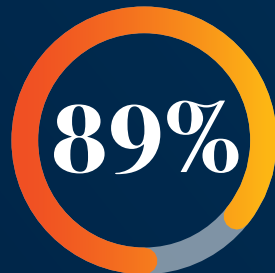
PEI's COVID-19 response grant round included an explicit focus on supporting women's economic inclusion by strengthening program design and implementation. Pioneering work on this front is taking place by PEI grantees in Angola, Cameroon, Fiji, and Indonesia. Read more under our [PEI Results: Country Engagement](#).



PEI Engagement Survey 2022: Perspectives across Partners



of respondents think PEI is addressing critical operational questions to scale up economic inclusion programs through its evidence and learning activities



of World Bank staff are extremely or very satisfied with the link between PEI activities and the PEI mission



of respondents indicate that at least one aspect of their work has been influenced by PEI activities or engagements



of government partners are extremely or very satisfied with the operational relevance of information or data provided by PEI



of respondents from Technical Partner organizations are extremely or very satisfied with the usability of PEI knowledge products

PEI's 2022 Engagement Survey was conducted from May to June 2022. PEI thanks the 389 respondents who engaged in the survey across governments, Technical Partners, the World Bank, Steering Committee and Advisory Council members, and other stakeholders in PEI's mission.

PEI Delivers Results through Three Result Areas





RESULT AREA REPORTS

Country Engagement

PEI's goal: Governments build their capacity to implement economic inclusion programs at scale

Coordinated interventions and PEI grants led to powerful outcomes in country programming that enabled PEI to achieve the following:

- Supported the inclusion of Women's Economic Empowerment as a cross-cutting priority with governments, World Bank teams, and Technical Partners
- Leveraged national social protection systems to scale economic inclusion programming
- Identified and addressed operational challenges, knowledge gaps, and thematic priorities to increase capacity
- Leveraged national programs through World Bank financing and partner expertise

Key 2022 Results for PEI's Country Engagement

PEI continued to provide grant support to a strategic portfolio of 20 national economic inclusion programs all at varying stages of design and implementation. These grants contribute a combined \$4.2 million directly to economic inclusion programs and leverage \$1.7 billion in International Development Association (IDA) financing.

These grants advance knowledge and evidence of impact. Today, PEI grants help countries effectively respond to the COVID-19 pandemic, which has disproportionately affected the poorest. In addition, PEI has laid the groundwork for a new round of country grants to be distributed in 2023 in support of the growing call to action for climate resilience.

20

Government programs receiving intensive grants and PEI technical support

28

Government programs receiving technical advice from PEI

12

World Bank operations receiving expert preparation-stage reviews by PEI

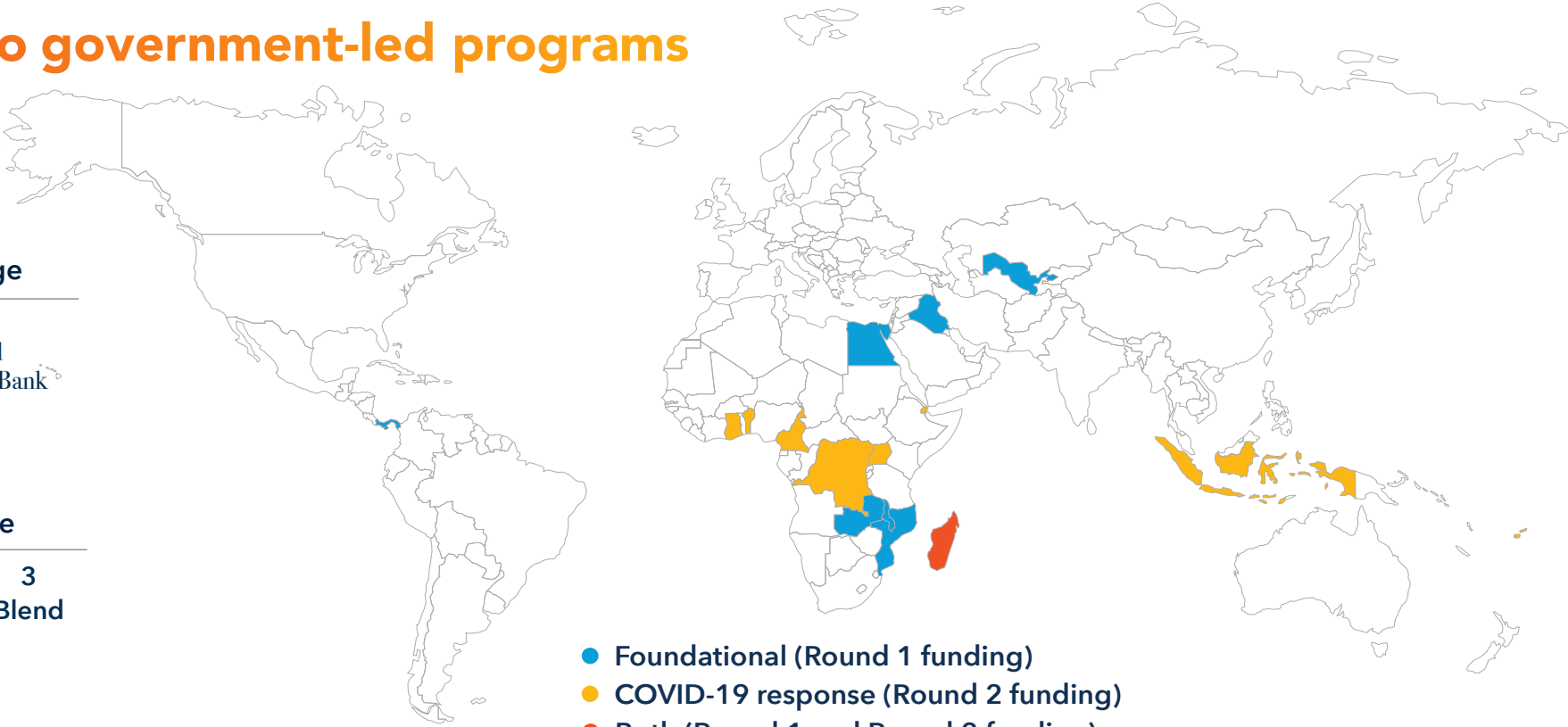
PEI grants are central to its influence model: 20 grants were awarded to government-led programs

PEI Grant Funding and World Bank Leverage

\$4.2 million granted to 19 countries (20 programs) by PEI

\$1.7 billion leveraged from the World Bank

Grantee Regions			Grantee Lending Source		
1	2	1	11	5	3
LAC	EAP	EAC	IDA	IBRD	Blend
11	2	1			
AFR	SAR	MNA			



- Foundational (Round 1 funding)
- COVID-19 response (Round 2 funding)
- Both (Round 1 and Round 2 funding)

A dynamic portfolio, learning from foundational grants

This year, PEI supported the ongoing implementation of its 10 foundational grants, as well as a new cohort of 10 PEI country grants launched to expedite the COVID-19 pandemic recovery efforts. Refer to [Annex: Individual Grants Status](#) for a full summary of grant awards.

Four countries completed their grant activities from the foundational round: Afghanistan, Bangladesh, Egypt, and Panama. All remaining grant activities in the foundational round are expected to close by December 2022. PEI is working closely with government counterparts and World Bank operational teams to advance grant awards and ensure lessons inform broader evidence and learning initiatives. As a trusted partner, PEI continues to engage with these operational teams to support continued efforts to scale.

PEI's second round of COVID-19 grants advanced implementation in 10 countries: Angola, Benin, Cameroon, Democratic Republic of Congo, Djibouti, Fiji, Ghana, Indonesia, Madagascar, and Uganda.

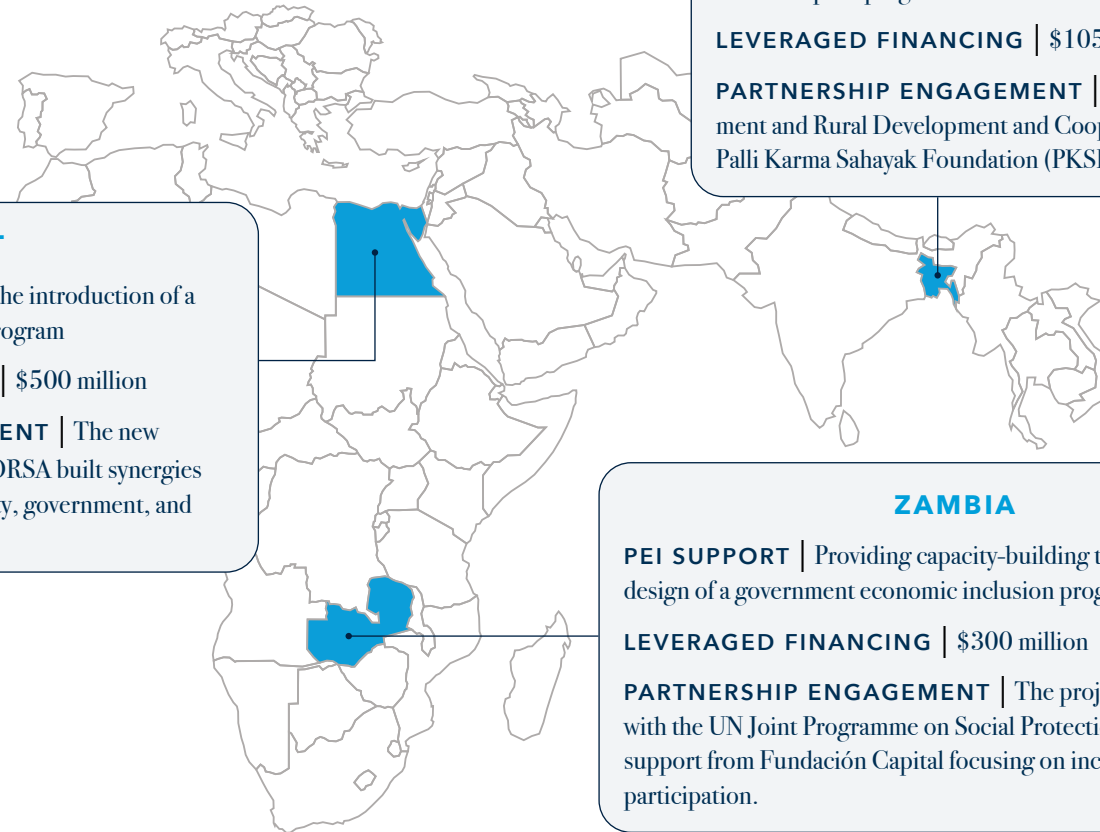
Many programs scaled up economic inclusion programs to respond to the impacts of COVID-19 by expanding to urban areas and improving the livelihoods of women. For example, Cameroon is actively investing in adapting mobile payments as part of preexisting cash transfer programs, while Afghanistan is working on diagnostics to identify bottlenecks for young women and girls to benefit from their programs. Angola is introducing adaptations to its flagship safety net Kwenda program to provide childcare alternatives. These cumulative efforts have placed intentional and targeted focus on protecting vulnerable populations and supporting women's economic empowerment.



1

COUNTRY ENGAGEMENT

Grants leverage national programs, World Bank financing, and global expertise



EGYPT

PEI SUPPORT | Supporting the introduction of a new economic inclusion pilot program

LEVERAGED FINANCING | \$500 million

PARTNERSHIP ENGAGEMENT | The new economic inclusion program FORSA built synergies and alignment across civil society, government, and third-party implementers.

BANGLADESH

PEI SUPPORT | Supporting the introduction of a new economic inclusion pilot program

LEVERAGED FINANCING | \$105 million

PARTNERSHIP ENGAGEMENT | Ministry of Local Government and Rural Development and Cooperatives, ILO, BRAC, and Palli Karma Sahayak Foundation (PKSF).

ZAMBIA

PEI SUPPORT | Providing capacity-building to inform the design of a government economic inclusion program

LEVERAGED FINANCING | \$300 million

PARTNERSHIP ENGAGEMENT | The project works closely with the UN Joint Programme on Social Protection and leverages support from Fundación Capital focusing on increasing women's participation.



PEI grants address operational challenges, knowledge gaps, and thematic priorities

PEI supports grantees to integrate economic inclusion at critical stages of the project cycle through investments in cash-plus interventions, diagnostics, and evidence-building.

Diagnostics and market analyses were prepared by several grantees to determine the viability of and most effective approach for integrating economic inclusion programming into their respective programs. Egypt, Ghana, Iraq, and Zambia conducted market assessments and Djibouti completed an informal sector analysis.

Many of the grants supported the capacity-building of government programs, including operational manuals and guidelines to expand economic inclusion training curricula. Country examples include Afghanistan's data collection toolkit for fragile and conflict-affected environments and Zambia's operational manual for establishing value chain links for poor beneficiaries.

ADDITIONAL RESOURCES

APPENDICES



PEI Country Grants in Action: Delivering Key Support to Government Partners in Benin

Benin's labor market is characterized by a very high degree of informality, with 90.7 percent of jobs being informal. A substantial youth and gender gap also exists in Benin, with under-employment affecting more youth (92%) and rural women (91%) than the rest of the economically active population.

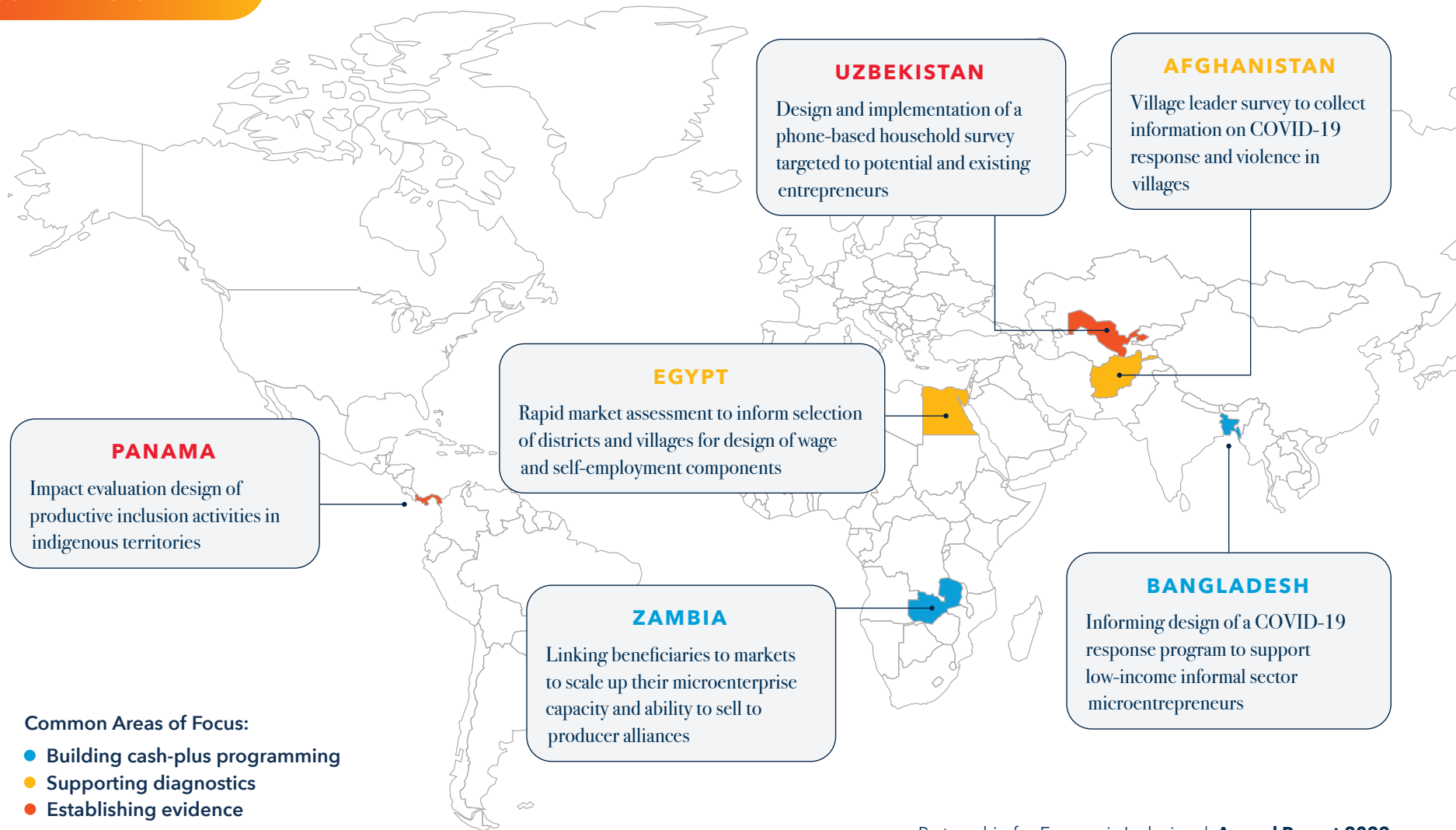
In response, the National Employment Agency (ANPE), with support from the World Bank's Youth Inclusion Project, designed a program for young people with little or no education, called Azoli ("pathway to employment"), to provide a comprehensive set of employment services for vulnerable youth to ensure greater economic inclusion. The program includes i) orientation; ii) life skills training; iii) life and professional development plan formulation; iv) entrepreneurship training; v) short-term technical training; vi) coaching; and vii) start-up grants (approximately \$400).

PEI supports ANPE and the World Bank team by introducing gender-responsive innovations to the Azoli program, strengthening its institutional capacities to deliver the bundle of interventions to maximize outcomes for young women. The team is also developing longitudinal qualitative research to identify the constraints faced by women to help them make the most of their startup grants and training.

1

COUNTRY ENGAGEMENT

Foundational grants included common themes and priorities to support scale-up



CAMEROON

- Identifying service providers for digital service delivery and mapping digital savings and loan facilities
- Developing a package of support to diversify occupation sectors, particularly encouraging women to join male-dominated sectors

ANGOLA

- In initial phases of work, conducting dialogue with Project Implementation Unit
- Upgrading the cash transfer program to include productive inclusion activities for women such as business skills trainings, agency-based coaching, etc.

INDONESIA

- Conducted needs assessment of a new urban revitalization
- Collaborating with the urban team to advance thinking on upgrading slums, tourism development, and green jobs
- Referral services to be incorporated into the project

PEI's COVID-19 response required flexibility to adapt to the pandemic and support recovery efforts

PEI's COVID-19 response places women's economic empowerment at the center

The COVID-19 pandemic has put significant additional pressure on female-led households with limited access to job opportunities and increased caring responsibilities. As a result, PEI has focused its investments to support country teams to identify constraints and uncover opportunities for women, facilitate women's access to livelihoods through technology adoption, and support the early childhood development agenda.

In Angola, the team is working to assess constraints faced by women and girls that will inform the design of economic inclusion interventions. In Benin, the government and World Bank teams are introducing gender-responsive innovations, including adequate childcare alternatives, to the national economic inclusion program. Uganda is also implementing a systematic diagnostic of the gendered impact of economic inclusion interventions. PEI is working with grant awardees to promote peer exchange and broader global learning.

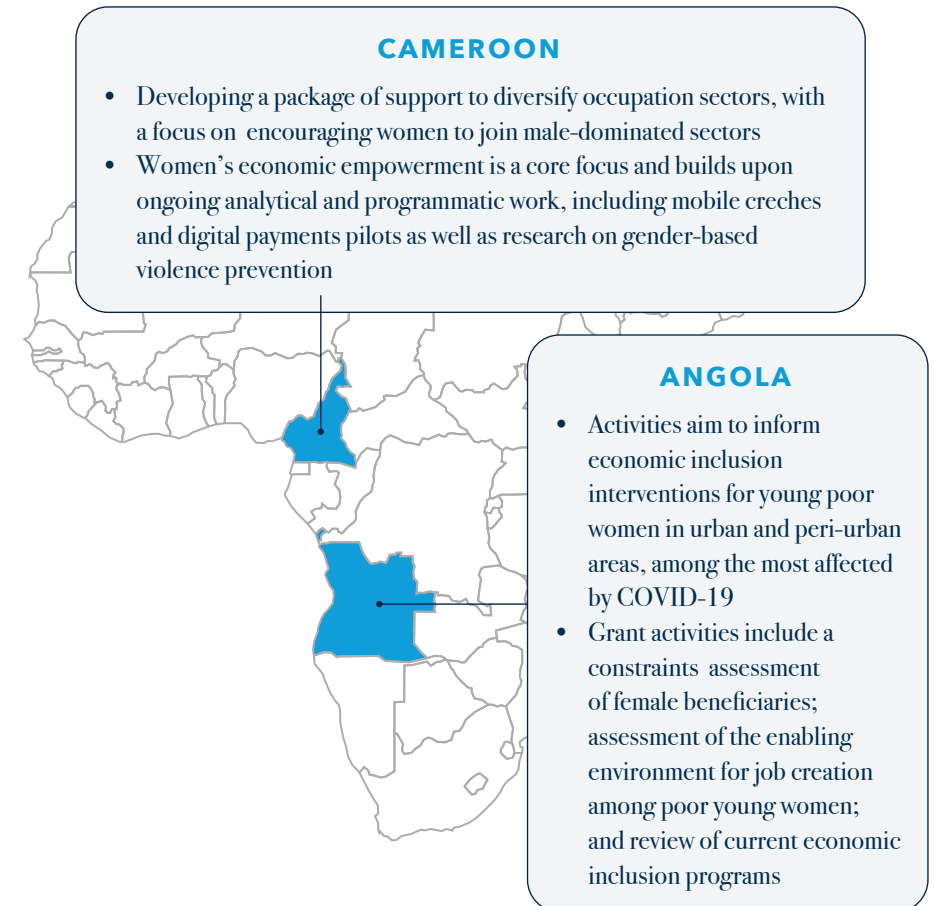


In complement to PEI's focus on women's economic empowerment, the COVID-19 response has also included a focus on youth and their opportunities in the informal sector, often with a climate resilience focus. In Fiji, the government is incorporating economic inclusion through a public works program to support its green, resilient, and inclusive development agenda.

The government of Indonesia is developing tools to provide adequate livelihood opportunities, and assessing value chains for poor and vulnerable urban settlers as part of its national urban regeneration strategy. In Djibouti, partners are analyzing challenges faced by the informal sector in recovering from the COVID-19 pandemic and supporting poor households on the verge of food crisis.

PEI is increasingly applying the cross-cutting lens of women's economic empowerment across its efforts at the country, knowledge, innovation, and partnership levels. This intentional approach aims to advance programming for better gender outcomes, and to surface insights and best practices that move forward the potential synergies between economic inclusion and women's economic empowerment.

Grant Spotlight on Women's Economic Empowerment



PEI responds to a surge in World Bank-financed operations, focusing on Social Protection and Jobs

The World Bank’s response to the COVID-19 crisis resulted in a surge in programming, particularly in the Social Protection and Jobs Global Practice. Demand for economic inclusion programs has been increasing, resulting in almost 300 World Bank economic inclusion programs across seven World Bank Global Practices in more than 90 countries. This demand shaped PEI’s country engagement efforts and broader work to synthesize lessons from on-the-ground operations. This year, PEI met this critical rising demand for technical support from governments and practitioners, particularly in social protection, on both project design and implementation.

SHAPING PROJECT DESIGN

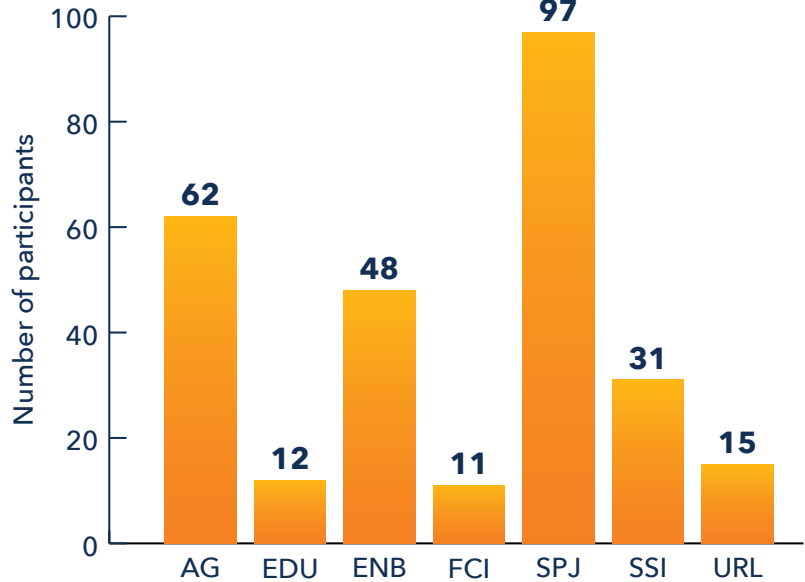
- Within the World Bank, PEI is now an expert-of-choice for formal project reviews. This year, PEI reviewed 12 pipeline operations, advising on rationale, delivery modalities, impacts, and costs.

SUPPORTING PROJECT IMPLEMENTATION

- PEI received and responded to over 50 queries from 20+ countries in fiscal 2022 in addition to a growing volume of requests from partner organizations.
- PEI supported over 400 operational staff within the World Bank in fiscal 2022 through an ongoing capacity program for Task Team events, Open Houses, and Country Information Exchanges.

Economic Inclusion Programs by Global Practice

(276 projects total - as of 04/01/22)



Note: AG = Agriculture and Food; ED = Education; ENB = Environment, Natural Resources, and Blue Economy; FCI = Finance, Competitiveness, and Innovation; SPJ = Social Protection and Jobs; SSI = Social Sustainability and Inclusion; URL = Urban Resilience and Land.

PEI Country Grants in Action: Supporting the Government of Malawi to Deliver a Cash-Plus Approach

Malawi's Social Support for Resilient Livelihoods Project was designed to respond to the need for a strategy to promote economic opportunities, particularly for youth and women. Malawi emphasized moving beyond a primary focus on consumption support to include resilient livelihoods and shock-responsive safety nets.

The government of Malawi with support from the World Bank, is developing a "cash-plus" model, which will be combined with a Basic Livelihoods package featuring capacity-building in business management, financial literacy, safeguards, disaster risk management, group dynamics, savings mobilization, and transformative, mindset-shift training.

The government has also established an Enhanced Public Works Program, which will employ climate-smart design, focused on land and water conservation and other interventions to minimize the adverse effects of natural disasters and improve land productivity.

To help the government develop the economic inclusion work, PEI is providing technical and operational support to build economic inclusion implementation capacity and enhance the design of the livelihood packages for beneficiary households. The joint activities include the development of graduation targeting criteria, customization of livelihood packages received by cash transfer beneficiaries, and an assessment of the livelihoods training curriculum.



RESULT AREA REPORTS

Evidence and Learning

PEI's goal: Governments and partners develop and incorporate relevant evidence on design and implementation into their economic inclusion programs

PEI shared information and evidence to increase governments' access to critical knowledge by:

- Launching global information-sharing platforms in response to increased demand
- Supporting a new wave of evidence from government programs
- Scaling up reach and access of learning efforts

Key 2022 Results for PEI Evidence and Learning

In fiscal 2022, PEI launched the Innovation and Learning (I&L) Hub, a multiyear program established to shape the evidence base for moving economic inclusion to scale. The I&L Hub supports the creation, curation, and application of evidence on economic inclusion programs. The Hub translates lessons emerging from countries into actionable guidance for program design and delivery for the sector at large in an effort to help national governments, World Bank teams, and the broader community of practice to work towards programming at scale.

Complementing the work of the I&L Hub, PEI developed and strengthened a network of knowledge-sharing platforms, which enabled real-time co-creation of knowledge and learning among practitioners, closing critical gaps in programming know-how and evidence. These efforts are increasingly influencing knowledge agendas as well as programming and policy priorities for governments and partner organizations.

39	22	178,678
Governments participating in PEI's learning events	Peer-to-peer knowledge exchange events organized, including Country Innovation Exchange events	Visits and pageviews of PEI's web-based knowledge-sharing platforms
21,901	13	1,212
Downloads, references, citations, or shares of PEI resources	Studies funded or commissioned by PEI completed	Knowledge products disseminated through PEI platforms

A global network of information sharing platforms launched by PEI

PEI has launched a network of global knowledge platforms that serve to engage diverse actors - from governments and multilaterals to researchers and NGOs - in the creation and sharing of knowledge.

These interlinked platforms are dynamic and support knowledge and evidence generation far beyond what any one entity can produce on its own.



State of Economic Inclusion Report 2021

[A global assessment on the state of economic inclusion programs reaching the extreme poor](#)



PEI Insight: A Resource Center

[PEI's global knowledge resource center](#) offering partners the opportunity to share publications, research, operational guides, and other resources in an open-access global knowledge platform



Open House Webinar Series

[Ongoing monthly webinar series](#) for a broad audience on policy, programming, and thematic areas of interest



Data Portal

[A searchable portal](#) on program design, coverage, and institutional arrangements



PEI's In Practice Publication Series

[PEI's in-house publication series](#) engaging partners to publish diagnostic studies, operational research, and policy notes



Impact Evaluation Collaborative

An initiative bridging knowledge gaps and generating evidence on the impact and cost-effectiveness of economic inclusion programs



Country Innovation Exchanges

A series of exchanges on ground-level innovations on thematic areas: deep-dives on cross-cutting priorities such as gender, urban, displacement, etc.

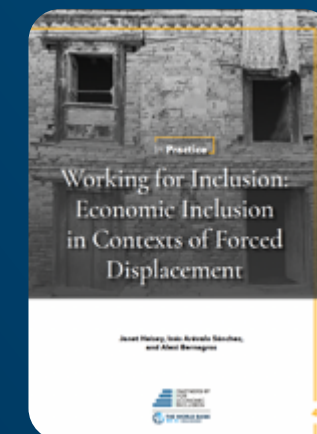


SPOTLIGHT

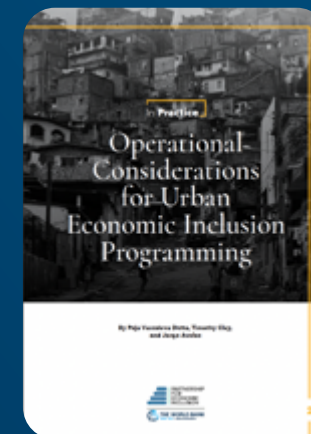
Country Innovation Exchanges: Peer-to-Peer Learning and Knowledge Exchange

In fiscal 2022, PEI hosted several Country Innovation Exchanges, assembling government policymakers, practitioners, Technical Partners, and World Bank Task Teams to facilitate the exchange of operational approaches to scaling up economic inclusion programs. The Exchanges represent a conscious effort to foster safe and dynamic environments for participants to discuss challenges and successes and engage in collective problem-solving. Country Innovation Exchanges are designed to meet the needs of the country and audience and can range from closed-door exchanges among a few country representatives to large thematic seminars for wider audiences. A few examples of Exchanges delivered in fiscal 2022 are as follows:

1 Forced Displacement Learning: In December 2021, PEI hosted an Exchange on forced displacement and economic inclusion. Turnout was exceptional, with more than 100 government representatives from 16 different nations in attendance. Also participating were Task Team members from the World Bank's Social Protection, Urban, Social Sustainability and Inclusion, Agriculture, and Fragility Global Practices, and technical experts from UNHCR and AVSI Foundation. This event, developed to advance the agenda on forced displacement, resulted in several additional opportunities. PEI was selected to participate in a high-level session on climate change at the Fragility Forum 2022, a major global event and, subsequently, PEI hosted an Open-House webinar drawing a varied audience to engage on the intersection of economic inclusion and forced displacement. Deliberations from all of this work, representing insights and new ground in a critically important thematic area, are captured in the PEI In Practice publication series.



- 2 Urban Adaptation:** In October 2021, PEI hosted an Exchange among World Bank country teams from Ghana, Malawi, and Pakistan to discuss the challenges of and initial diagnostics for designing productive inclusion interventions tailored to urban areas. This included assessing alternative livelihoods, engaging with several national sectors, and linking the programs with a bundle of services to be provided in urban centers to ensure a relevant design. The Exchange built on earlier work undertaken by PEI to unpack key features and adaptations of economic inclusion programming in urban areas (see [PEI's In Practice Operational Considerations for Urban Economic Inclusion Programming](#)).
- 3 Market Assessments:** In March 2022, PEI organized an exchange between BRAC and the Indonesia World Bank country team on how to advance localized market assessments (LMAs) in urban settings. The discussion centered on specific tools used in conducting LMAs (e.g., key informant interviews, focus groups, surveys, etc.). The seminar explored the typical size of the areas considered for LMAs, how to leverage LMA results to effectively target and conduct training, and how to prevent any unwanted market spillover effects. These experiences, along with insights from World Bank teams, informed a new In Practice publication on [Enhancing Links of Poor Farmers to Markets](#).
- 4 Women's Economic Inclusion and Digital Technology:** In May 2022, PEI hosted an exchange between Fundación Capital and World Bank country teams including Egypt, Mozambique, Panama, and Zambia to explore ways in which digital solutions can be used to scale economic inclusion programs and increase social and economic inclusion of women. This initiative was an effort to support PEI Grant Award countries to better advance women's economic empowerment outcomes through economic inclusion programming. Fundación Capital has developed digital products including apps (i.e., IgualdApp, AppTitude, and ConHector) to support engaging women in economic opportunities. The Exchange allowed country teams to explore adopting technologies to accelerate program coverage and amplify impact.



Supporting a new wave of evidence from government programs

In fiscal 2022, to advance PEI's Innovation and Learning (I&L) and bridge critical knowledge gaps on impact and cost-effectiveness, PEI established the Impact Evaluation Collaborative (see Spotlight), which engages governments, World Bank teams, research institutions, and select Technical Partners to support a new wave of impact evaluations of government programs.

To augment real-time learning, PEI gathered additional data on program costs and the landscape of economic inclusion programs in displacement contexts in collaboration with PEI Technical Partners and affiliate organizations. Learnings from these data-gathering exercises were shared in several PEI learning events and publications, including PEI's In Practice publication [Working for Inclusion: Economic Inclusion in Contexts of Forced Displacement](#) and Open House webinars on costing and forced displacement.

PEI ENGAGEMENT SURVEY KEY RESULTS

88% of users report that PEI's studies help fill in knowledge gaps and respond to critical operational needs.



SPOTLIGHT

Bridging Evidence Gaps through an Impact Evaluation Collaborative



Building on the efforts of PEI's I&L Hub, and in the spirit of catalyzing broader engagement and activity across stakeholders, PEI launched an Impact Evaluation Collaborative ("the Collaborative") in partnership with the World Bank's Development Impact Evaluation (DIME) Group and PEI's Technical Partners. In response to strong operational demand, the Collaborative bridges knowledge gaps and generates evidence on the impact and cost-effectiveness of economic inclusion programs. The Collaborative is focused on crafting, executing, and disseminating insights from a well-coordinated portfolio of impact evaluations that builds effectively on global evidence on economic inclusion programs. The initiative draws on PEI's deep engagement with the World Bank's operations, its wide partnership network, and DIME's expertise to evaluate large-scale interventions and develop pathways to maximize program impact.

New Demands: Supporting a New Wave of Evidence from Government Programs



- In-Person Policy Workshop**
 Countries participated in an in-person workshop to design impact evaluation studies and connect with international and local researchers.
- Virtual Technical Workshop (Fiscal 2023)**
 Countries that are advanced on impact evaluation design will be participating in a virtual technical workshop to receive technical assistance.

Twenty-four countries swiftly responded to PEI's open call to engage in the Collaborative, showing strong operational demand to generate robust evidence. Ten government-led economic inclusion programs at critical stages in program and evaluation design and evaluation were selected for an in-person impact evaluation workshop, ensuring early buy-in from national governments for implementation of rigorous evaluations alongside program implementation. The Collaborative also provided an important platform to build local research capacity and expertise. After a careful selection process, PEI identified 10 young researchers, a majority from the selected countries, whose research interests aligned with the vision of the Collaborative.

Between May 23 and 26, 2022, PEI convened the four-day in-person Impact Evaluation workshop with 10 country delegations. In addition to the PEI and DIME team, the workshop featured 27 senior government officials from eight countries, 26 research faculty including local and international researchers and advisors, and nine World Bank Task Team Leaders. Key themes emerged as priority areas of research, including the need to generate evidence on women's economic empowerment and to better understand the relationship between economic inclusion programming and a household's relative resilience to shocks.

PEI ENGAGEMENT SURVEY KEY RESULTS

95% of respondents indicate that at least one aspect of their work has been influenced by PEI activities or engagements, with research, evidence, or knowledge being the aspect most widely influenced by PEI.

Scaling up reach and access of all learning efforts

Over the year, PEI built upon and developed a variety of communication platforms, from social media to events and publications, that engaged a diverse group of policymakers and practitioners. The Partnership's materials were viewed extensively, including over 178,000 visits to PEI's web-based knowledge-sharing platforms. This represents a dramatic scale-up of PEI's reach, providing crucial access to economic inclusion research and good practices across more than 90 countries.

PEI has steadily increased the number of email and social media subscribers, with platforms featuring lively and substantive content, feeding from and contributing to the community's knowledge pool.

Newly implemented tools like PEI Insight host open-access research on economic inclusion programming. Both the PEI Data Portal and the flagship State of Economic Inclusion Report remain actively used by visitors, suggesting a consistent engagement with PEI's seminal products.

All these activities are pivotal in advancing the evidence and learning agenda, increasing the visibility of PEI and economic inclusion more broadly, and providing access to information on economic inclusion programming through public knowledge goods.

PEI ENGAGEMENT SURVEY KEY RESULTS

86% of PEI users are satisfied or very satisfied with the usability of PEI knowledge products.



PEI Evidence and Learning Platforms and Tools

PLATFORM OR TOOL	REACH
Twitter	Nearly 4.5 million impressions and 164,000 profile visits
LinkedIn	Over 270 new followers and over 600 profile visits
Country Innovation Exchanges	Over 100 representatives of over 15 country governments, World Bank Task Team members from 5 Global Practices, and technical experts from Technical Partners and affiliate organizations, including BRAC, UNHCR, and the AVSI Foundation
Task Team Leader Webinars	8 Webinars attended by over 350 World Bank Task Team Leaders and staff across Global Practices and units working on or planning for economic inclusion
Impact Evaluation Collaborative	10 country delegations, 27 senior government officials from 8 countries, 26 research faculty including local and international researchers and advisors, and 9 World Bank Task Team Leaders
In Practice	Over 2,100 total downloads of In Practice materials
Open Houses	More than 800 unique participants from over 90 different countries
Insight Resource Center	1,305 unique pageviews
PEI Bi-Monthly Newsletter	2,900 total subscribers
PEI Data Portal	2,552 portal pageviews



RESULT AREA REPORTS

Partnerships and Alliances

PEI's goal: Greater strategic collaboration in support of national programs by partners, stakeholders, and World Bank Group

Partnership continues to be a critical underpinning of PEI's influence model:

- PEI improved its monitoring and evaluation framework, demonstrating a partnership-driven commitment to learning
- PEI deepened the perspectives and expertise reflected in the partnership by expanding stakeholder engagement and adding new Advisory Council members
- PEI's cross-cutting focus on women's economic empowerment is reflected in World Bank policy commitments

Key 2022 Results for PEI Partnerships and Alliances

PEI continued to support the strategic collaboration of its expanding network of partners with clear results at country, knowledge creation, and policy levels. The cumulative effect of PEI's work is influencing programming and critical policy discussions, including, notably, the agreement of an IDA20 Policy Commitment on Gender and Economic Inclusion last year.

PEI kicked off 2022 with a collaborative process to refine its own results framework, sharpening internal learning on what works and what doesn't across its country-level and knowledge work. Alongside efforts to broaden its engagement of stakeholders, PEI looked to deepen its own expertise, through an expanded Advisory Council that brings greater issue-area and on-the-ground perspective to the work and the partnership at large. Finally, PEI deepened its ongoing engagement with its Technical Partners and governing bodies across a range of topics and themes, and across learning platforms.

35

Number of strategic collaborations between PEI and Technical Partners, affiliates, or other stakeholder organizations in the broader economic inclusion ecosystem

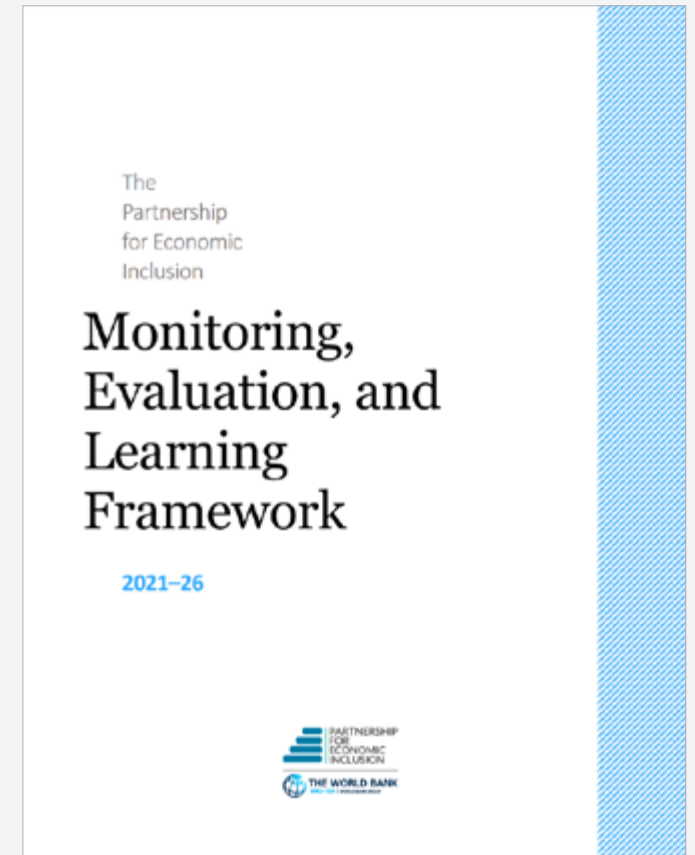
344

Number of funders, Technical Partners, broader economic inclusion stakeholders, and World Bank Global Practices engaged in PEI activities

Reaffirming a collective vision for impact

At the beginning of the fiscal year, PEI engaged in a consultative process with the partnership to refine PEI's Results Framework and its underlying Theory of Change. This effort was a critical investment as PEI matured from startup to a fully operational partnership. Engaging with partners and stakeholders to define how PEI measures its impact and holds itself to account helped set out a clearer common understanding of PEI's work and intended impact.

The collaborative exercise culminated in PEI's 2021-2026 Monitoring, Evaluation, and Learning (MEL) Framework, which includes PEI's refined Theory of Change (see Annex) and Results Framework. These investments will allow PEI to be more accountable and responsive to various partnership stakeholders, including current and prospective donors. The data and internal learnings enabled by PEI's new MEL Framework will inform and support PEI's future investments, and will benefit program-level learning, as well as broader learning agendas across the partnership.



Collectively advancing Women's Economic Empowerment

The agreement of an IDA20 Policy Commitment on Gender and Economic Inclusion, a significant development for the partnership, was made possible through extensive and diverse partnership engagements. The IDA provides the largest source of concessional loans and grants to the world's poorest and most vulnerable countries and populations. This pool of funding gets replenished with new priorities outlined every few years. The most recent replenishment, of \$93 billion, is the largest in its history, established to tackle challenges in the complex post-pandemic and increasingly climate change-affected environment.

A new explicit commitment on gender and economic inclusion ensures a stream of funding for programs that “incorporate specific productive economic inclusion components (e.g., producer cooperatives/associations, digital finance/savings and service delivery, entrepreneurship support, social care services, regulatory frameworks, and/or links to market support) for women...”

The IDA20 Policy Commitment on Gender and Economic Inclusion is the first of its kind during the IDA replenishment negotiations, and illustrates the influence and strength of the partnership. PEI engaged in technical collaborations with operational teams, alongside the World Bank Gender Group, and gender experts to support the realization of this Policy Commitment. This effort was enabled by technical and operational learning generated by PEI, which has gained traction within World Bank operations. PEI partners including BRAC, Trickle Up, and others complemented these efforts through advocacy and support of the IDA Policy Commitment through the Leadership Collaborative to End Ultra-Poverty, an affiliate initiative of PEI.



IDA20

Report from the Executive Directors of the
International Development Association
to the Board of Governors

Additions to IDA Resources:
Twentieth Replenishment

Building Back Better from the Crisis: Toward a Green,
Resilient and Inclusive Future

Approved by the Executive Directors of IDA

Broadening and deepening PEI perspectives

A diverse and broad partnership network representing a depth of relevant expertise is critical to PEI's work at the country, learning, and evidence generation levels.

In addition to PEI's formalized Technical Partner base, over the year, PEI increased its outreach and engagement with broader stakeholder organizations, networks, and affiliates. This effort allows PEI to create awareness of economic inclusion approaches among new actors, and to tap into broader programming, policy, and research perspectives to inform PEI's work.

To further the dialogue and collaboration of several organizations and NGOs involved in economic inclusion approaches beyond PEI-facilitated platforms, PEI continued

sponsorship of the Leadership Collaborative to End Ultra-Poverty, a group of organizations gathering to work on advocacy and programming objectives.

In recognition of the need to ensure a broad base of perspectives and expertise guiding PEI's efforts, PEI expanded its Advisory Council, adding critical voices of implementers, policymakers, and global thought leaders and experts in the fields of women's economic inclusion, food systems, and climate change adaptation.

PEI's Expanded Advisory Council

NEW MEMBERS



**Nana Oye
Bampoe Addo**

Former Minister for Gender,
Children, and Social Protection
Ghana



Benjamin Davis

Director of Inclusive Rural
Transformation & Gender
Equality Division
Food and Agriculture Organization



Amadeus Kamagenge

Former Director
Tanzania Social
Action Fund



Rita Larok

Chief of Party for the Graduating
to Resilience Activity in
Kamwenge
AVSI, Uganda



Reema Nanavaty

Director
Self-Employed Women's
Association, India



Keetie Roelen

Research Fellow and Co-Director of the
Centre for Social Protection
Institute of Development
Studies

CONTINUING MEMBERS



Bill Abrams

Former President
Trickle Up



Loli Arribas-Banos

Practice Manager for the Social
Protection and Jobs Global Practice
World Bank



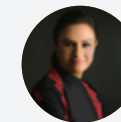
Frank F. De Giovanni

Former Director of Financial
Assets and Co-Founder of the
CGAP/Ford Graduation Initiative
Ford Foundation



Nathanael Goldberg

Director of Sector Programs Research
& Policy Social Protection
Innovations for
Poverty Action



Marvi Memon

Former Minister for
Poverty Alleviation
Pakistan



Carolina Trivelli

Former Minister for Development
and Social Inclusion
Peru

Partners and stakeholders actively contribute to the knowledge agenda

PEI's network of learning platforms was well leveraged by a diversity of voices, including governments, Technical Partners, and broader stakeholder organizations. Several examples are featured below.

	Concern Worldwide	Continuing collaboration to deliver a comprehensive framework around economic inclusion cost drivers, cost-effectiveness, and program sustainability. Another important engagement took place around the forced displacement agenda. Both resulted in an Open House and in a PEI-led Fragility Forum event .
	FAO	Key partnership in the development of the intersection between food systems and the role of economic inclusion and livelihoods in building an inclusive, efficient, and sustainable food systems approach. Resulted in an Open House .
	Fundación Capital	Collaboration on various fronts to promote the use of digital innovations for women's economic inclusion. Resulted in a PEI Open House and Country Innovation Exchanges.

	Trickle Up	Engagement with Trickle Up to learn from their interactive apps and digital priorities for program management, delivery, and training. Resulted in an Open House .
	Village Enterprise	Collaboration to explore Village Enterprise's Adaptive Management System for case management and decision-making and its potential scalability. Resulted in an Open House .
	ideas42	Collaboration with ideas42 to develop the conceptual intersection between behavioral science and economic inclusion programs. Resulted in a PEI In-Practice volume and an Open House event .
	CGD	Collaboration with CGD, a key actor in the defining IDA20 commitments on the gender theme. Resulted in a PEI Open House .
	Representatives from the University of Dublin, the University of Oxford, and the University of the Western Cape	Various representatives from academia have shared their research at PEI events , ranging from food security specialists to behavioral economists, helping to shape conversations around economic inclusion and their fields of expertise.
	Leadership Collaborative for Ending Ultra-Poverty	PEI supported regular monthly engagement of about 35 institutional members, represented by approximately 75 leaders in the field. The Leadership Collaborative convenes regularly for learning exchanges where members share practical experience, innovations, and trends in economic inclusion.



SPOTLIGHT

Partnership Collaboration Generates Knowledge on Forced Displacement

[Working for Inclusion: Economic inclusion in Contexts of Forced Displacement – PEI In Practice Series Publication](#)

Collaboration among partners has significantly advanced learning on how economic inclusion programs can be part of program and policy solutions in contexts of forced displacement. PEI has resulted in significant learning around how economic inclusion programs can be part of a programmatic and policy solution in contexts of forced displacement. PEI has crafted several opportunities for partners to work together, learn from one another, and contribute to key knowledge products on this topic, for use by policymakers and implementers.

PEI's Country Innovation Exchange on forced displacement brought together a dynamic group of collaborators including over 100 representatives of 16 country governments, World Bank Task Team members, experts from UNHCR, a PEI Technical Partner, and AVSI, which is now represented on the PEI Advisory Council.

As a follow-on from the Exchange, PEI moderated a podcast for the Fragility Forum, featuring four case studies of impact evaluations of graduation programs implemented across contexts of fragility, conflict, and violence, in Afghanistan, Democratic Republic of Congo, Mozambique, Nigeria, and Uganda, with several of PEI's Technical Partners and affiliate organizations involved, including Innovations for Poverty Action, UNHCR, AVSI, Women for Women International, and World Bank DIME.

This and previous research resulted in an In Practice publication, which, in turn, informed a working paper for the next World Development Report. The collaborations on forced displacement also informed a PEI Open House webinar, which brought together diverse policymakers and implementers to discuss experiences from government programs in Republic of Congo, Concern Worldwide's programs in Democratic Republic of Congo, Pakistan, and Somalia, and UNHCR experiences across several contexts.



Moving Forward into 2023

PEI has made remarkable strides in its first three years, with country-level investments, learning products and platforms, and fortified partnership. This all serves as a strong foundation for responding to the growing demand for country and program support. Several key lessons emerged during 2022.

Learning by Doing: Lessons and Challenges

- PEI's country engagement approach has evolved to meet government demands. In addition to country programming, there is an increased focus on national policy and strategy. Demand continues to surge, especially across social protection programs.
- PEI's approach to grant support has been effective to push an agenda on scale. PEI has an effective influence model that leverages national programs, World Bank financing, and partner expertise. Grant implementation is progressing well despite the constraints of the COVID-19 operational environment.
- PEI's grant awards will be shaped by major crises in the coming years, for example, the COVID-19 pandemic, food price inflation, and climate change. Stakeholders anticipate an increased demand for PEI to generate and disseminate evidence on emerging and growing challenges, such as climate resilience, women's economic empowerment, and food security.
- Stakeholders value PEI's evidence and learning approach, which identifies critical operational questions, expediting the scaling of economic inclusion programs. Stakeholders are engaged; the suite of events, platforms, and products PEI provides is accelerating a thriving and expanding partnership.



Future Priorities

In 2023, PEI will continue to build on its foundational work through directly engaging countries, collaboratively developing and disseminating knowledge products, and forging strategic partnerships in priority areas. In addition to maturing its current work plan, PEI has identified four flagship priority opportunities that will significantly advance its mission in 2023 and beyond: *to support the adoption of national economic inclusion programs that increase the earnings and assets of extremely poor and vulnerable households.*



Opportunity 1: Advancing Women's Economic Empowerment

All parts of PEI's work plan over the past year have reinforced the tremendous complementarity and potential at the nexus of economic inclusion programming and women's economic empowerment. Continuing into Phase 2 of the partnership, this remains a cross-cutting priority. The 20th IDA replenishment, containing a policy commitment for women's productive economic inclusion, provides a critical window of opportunity for PEI to support this agenda in collaboration with partners across and outside of the World Bank.

As a cross-cutting focus of its work program, PEI will work to integrate women's economic empowerment in its grant-supported country programming especially. The agenda will

be prioritized through the climate-resilient country programming agenda. Similar to the approach taken to COVID-19, PEI will work to support national partners to apply state-of-the-art, gender-smart design and implementation principles to maximize women's economic empowerment and operational learning.



Opportunity 2: Climate Resilience and Green Recovery

Climate change is profoundly affecting the lives of billions of people around the world – especially the poorest. The climate crisis coupled with the COVID-19 pandemic severely undermined the livelihoods of the poor by increasing the risk of food insecurity, climate migration, and labor market disruptions. The current context of expanding crises related to food, fertilizer, and fuel price inflation and the Russian invasion of Ukraine exacerbates pre-existing needs.

As governments consider viable options to address extreme poverty in the current global landscape, a rare opportunity is presented to transform economies and accelerate a green transition, otherwise known as a green recovery. In response, PEI has completed an expert review and is embarking on a consultative exercise to frame the next phase of country engagement including the green recovery thematic. The recent Climate Change Report (IPCC,

2022) brings into focus a changing development paradigm regarding climate change, extreme poverty, and risks to the poorest. Human, ecological, and climate systems interact to generate and compound climate impacts and risks. The IPCC estimates that an increase in temperatures above 2° C will result in irreversible environmental impacts, which will cause economic and social risks for supply chains, markets, natural resource flows, and transboundary conflicts.

PEI is preparing to transform the landscape of government-led programming, building on social protection investments and linkages with agriculture, environmental, and natural resource interventions. The planned round of grants will aim to (i) support in-progress and planned country programs with innovations and modifications to support more green, resilient, and inclusive development outcomes; (ii) advance economic inclusion as a part of the policy toolkit to promote a just green recovery over the medium and long term; and (iii) amplify country operational lessons and inform a broader global agenda for knowledge and learning.



Opportunity 3: Expanding the Evidence Base for Economic Inclusion

PEI has an immediate opportunity to advance a new wave of evidence with government partners in at least eight country programs. Over the past several months, PEI has established a network of government, Technical Partners, and local and international researchers to advance a multi-year evaluative work program. In the first phase of work, PEI identified 10 country operations from a pool of 25 applicants. The supported countries include Angola, Bangladesh, Cameroon,

Ethiopia (one rural project and one urban project), Haiti, Malawi, Sierra Leone, and South Sudan. In May 2022, PEI convened these delegations for an in-person training focusing on planning technical, funding, and operational requirements for a set of cross-country evaluations. The work is being conducted with PEI Technical Partners, the DIME Group at the World Bank, and a faculty of local and international researchers.

PEI is now ready to advance this work program with an immediate effect. The development of a pipeline of future operations is also anticipated. In parallel, PEI's real time efforts to advance learning and evaluation are planned.



Opportunity 4: Promoting Knowledge Exchange and Open-Access Data

At the heart of PEI's work program is a push towards strengthened knowledge exchange as the key to mainstreaming and scaling up economic inclusion programming by governments. The next phase of PEI's work will continue to prioritize and advance this theme.

PEI is delivering an update to the Open-Access Data Portal, launching the State of Economic Inclusion Report preparation for 2024, and expanding our suite of Country Innovation Exchange activities.

PEI Technical and Funding Partners

As we conclude 2022, PEI thanks its committed group of Technical Partners and its Funding Partners for your valued support and contributions over the past year.

Additional Resources



[PEI Insight Resource Center](#)



PEI [Twitter](#) and [LinkedIn](#) accounts



[PEI In Practice Series](#)



[PEI Website](#)



[PEI Data Portal](#)



[The State of Economic Inclusion 2021](#)



[PEI YouTube Channel](#)



[Monitoring and Evaluation Framework](#)



[IDA20 - Building Back Better from the Crisis : Toward a Green, Resilient and Inclusive Future](#)



Annexes

Results Framework

#	Indicator	Unit	Breakdown	Baseline Value	FY26 Target	Value in Current Reporting Period (FY22)
IMPACT 1: Extremely poor and vulnerable households are able to improve their lives by participating in economic inclusion programs implemented through government systems.						
1	Evidence of positive impacts in beneficiaries' wellbeing achieved by government economic inclusion programs	Evaluations	–	A review of evaluations of 80 programs in 37 countries shows that a broad range of economic inclusion programs have shown promising and potentially sustained impact on a wide range of outcomes. Most of these evaluations are from programs at nascent stage and are nongovernment-led	A review of a larger body of impact evaluations shows economic inclusion programs implemented at scale through government systems result in improvements in beneficiaries' wellbeing, including by increasing income, and assets, and improving women's economic empowerment (WEE)	Due in FY25
IMPACT 2: Government systems are strengthened through improved program delivery, fiscal, and policy coherence.						
2	Evidence of increased coordination and cost optimization within government structures	Countries	–	Not available	Evidence found in at least 5 countries	Due in FY23

#	Indicator	Unit	Breakdown	Baseline Value	FY26 Target	Value in Current Reporting Period (FY22)
LONG-TERM OUTCOME: Governments implement effective economic inclusion programs at scale for extremely poor and vulnerable populations.						
3	Number of beneficiary households in government economic inclusion programs	Households	Sector at large	18,600,000	26,000,000	19,098,876
		Individuals	Sector at large	85,900,000	120,000,000	87,759,816
		Households	PEI grantees	Not available	–	537,267
		Individuals	PEI grantees	Not available	–	2,723,252
4	Percentage of government programs serving predominantly women and advancing WEE	%	Sector at large	11%	At least 50%	14%
			PEI grantees	Not available	–	33%
5	Percentage of government programs serving the extreme poor and vulnerable	%	Sector at large	60%	80%	62%
			PEI grantees	Not available	–	73%
6	Number and percentage of governments with economic inclusion programming at scale	No.	Sector at large	16 government programs	At least 60 government programs	18 ¹
		%		15% of all government programs	30% of all government programs	21%
		No.	PEI grantees	Not available	–	– ²
		%		Not available	–	–

¹ Number of government programs refers only to active programs with data in landscape survey.

² PEI grantee data only available from 11 countries.

#	Indicator	Unit	Breakdown	Baseline Value	FY26 Target	Value in Current Reporting Period (FY22)
7	Number and percentage of government economic inclusion programs that report positive sustained impacts on income, assets, and WEE	No.	–	29 government programs	65 government programs	Due in FY23
		%	–	85% of government programs with an impact evaluation	90% of government programs with an impact evaluation	Due in FY23
INTERMEDIATE OUTCOME 1: Governments build their capacity to implement economic inclusion programs at scale.						
8	Number of governments participating in PEI's learning events	No.	Sector at large	Not available	At least 40 governments	39
			PEI grantees	Not available	–	8
9	Percentage of governments that report having scaled up in the past 12 months	%	Sector at large	75%	85%	Due in FY23
			PEI grantees	Not available	–	Due in FY23
INTERMEDIATE OUTCOME 2: Governments and partners develop and incorporate the relevant evidence on design and implementation into their economic inclusion programs, as best fits their contexts.						
10	Number of visits to and pageviews of PEI's web-based knowledge-sharing platforms	No.	Total visits (all platforms)	0	500,000	178,678
			Total website visits	0	80,000	19,172
			Total Insight Pageviews	0	25,000	1,305 ³
			Total Data Portal pageviews	0	25,000	2,552
			Total newsletter subscribers	0	10,000	1,087

³ InSight pageviews begin in March 22 when the tool was soft launched.

#	Indicator	Unit	Breakdown	Baseline Value	FY26 Target	Value in Current Reporting Period (FY22)
11	Number of downloads, references or citations, and external shares (including retweets and social media shares)	No.	Downloads	0	>100,000	21,901
			References/citations	0	>100	21
			External shares	NA	>5,000	225
12	Percentage of economic inclusion programs that have research activities planned or underway to inform their economic inclusion programming	%	Sector at large	79%	At least 90%	69%
			PEI grantees	Not available	–	82% ⁴
13	Percentage of economic inclusion programs or organizations whose policy or programming has shifted in response to research or evidence shared by PEI	%	Sector at large	Not available	At least 75%	95% ⁵
			PEI grantees	Not available	–	100% ⁶
INTERMEDIATE OUTCOME 3: Greater strategic collaboration is achieved, including through knowledge exchange, in support of national programs by partners, affiliates, and the World Bank.						
14	Number of references to economic inclusion programming in World Bank leadership statements	No.	–	0	20	10
15	Number of strategic collaborations between PEI and Technical Partners, affiliates, or other stakeholder organizations in the broader economic inclusion ecosystem	No.	–	10	100	35

⁴ The FY22 landscape update mostly captured nongovernment programs, so this figure may be an underestimation. It could also be that, due to COVID, research activities have been impacted

⁵ For the sector at large, data is from the Engagement Survey and captures percentage of respondents (not organizations) who stated that PEI work and engagement informed at least one of the following aspects: research, evidence or knowledge, design, implementation and funding of programs, and program or organizational strategies.

⁶ For PEI grantees, this is based on 14 responses. It excludes 4 closed grants from which this information was not captured and two current grantees who have not responded this question.

#	Indicator	Unit	Breakdown	Baseline Value	FY26 Target	Value in Current Reporting Period (FY22)
16	Evidence that country governments and other actors, including the World Bank, affiliates, and wider stakeholders, are increasingly collaborating in support of economic inclusion interventions and PEI's role in motivating them	No.	–	0	40	4
OUTPUT 1: Government economic inclusion programs are designed and implemented with financial and technical support from PEI.						
17	Number of government programs receiving intensive support from PEI (total), by status of the grant (active/completed), and with a systematic gender component	No.	Total active/complete with a systematic gender component active	10	40 grants active or completed and at least half with a systematic gender component	20
18	Number of government programs receiving light-touch support from PEI team	No.	Total	12	40	28 ⁷
			Peer review	Not available	–	10
			Helpdesk support	Not available	–	22
			Country presentations	Not available	–	4
19	Percentage of government officials receiving support by PEI that state that PEI's support has been useful to their work on economic inclusion	%	–	0	At least 75%	77%

⁷ 12 country peer reviews (excluding 3 non-country peer reviews) and 10 unique countries. 41 country helpdesk queries (excluding six non-country queries) and a total of 22 unique countries supported. Around 22 of the queries are from PEI grantee countries (13 unique grantee countries). Six peer reviews are from PEI grantee countries (five unique grantee countries). In total, 28 unique country governments have received light-touch support (removing overlaps), of which 14 are PEI grantees.

#	Indicator	Unit	Breakdown	Baseline Value	FY26 Target	Value in Current Reporting Period (FY22)
OUTPUT 2: Contributions are made to a new wave of evidence and learning on government-led programs at scale, focusing on the main research gaps identified.						
20	Number of studies funded or commissioned by PEI completed	No.	Total	3	40	13 ⁸
			Country	Not available	–	5
			Global	Not available	–	8
21	Percentage of users reporting that PEI's studies help fill in knowledge gaps and respond to critical operational questions	%	–	0	At least 75%	88%
OUTPUT 3: Cutting-edge economic inclusion knowledge platforms are established and maintained to share robust and relevant content.						
22	Website established and maintained	Rating	–	3	5	3
23	Open-Access Data Portal established and maintained	Rating	–	3	5	3
24	Online platform to capture and share knowledge (PEI Insight Resource Center) established and maintained	Rating	–	1	5	2
OUTPUT 4: Public-facing learning events and dissemination are conducted to generate knowledge and promote peer-to-peer learning.						
25	Number of peer-to-peer knowledge exchange events organized, by type of event	No.	–	3	100	22 ⁹

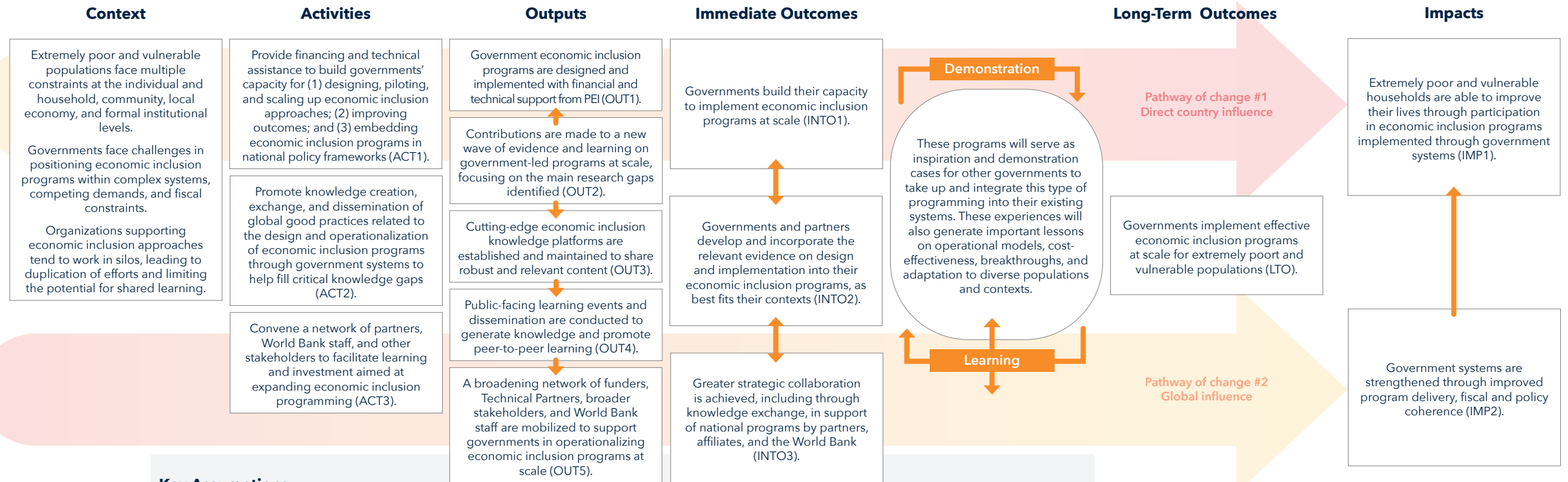
8 This includes 7 In Practice notes and briefs and 4 publications from PEI grantees.

9 This includes 8 Open House webinars, 8 Task Team Learning Series webinars, 5 Country Innovation Exchanges and an Impact Evaluation workshop. Nearly 2,200 participants (1200+ individuals) have taken part in PEI learning events organized in FY22

#	Indicator	Unit	Breakdown	Baseline Value	FY26 Target	Value in Current Reporting Period (FY22)
26	Number of knowledge products disseminated through PEI platforms	No.	Total	3	Over 400	1,212 ¹⁰
			Data Portal	Not available	–	219
			Insight	Not available	–	334
			Website	Not available	–	30
			Newsletter	Not available	–	61
			Google Drive	Not available	–	150
OUTPUT 5: A broadening network of funders, Technical Partners, broader stakeholders, and World Bank staff are mobilized to support governments in operationalizing economic inclusion programs at scale.						
27	Number of funders, Technical Partners, broader economic inclusion stakeholders, and World Bank Global Practices engaged in PEI activities	No.	Total	10		344
			Funders (excluding Technical Partners)	Not available	175	2
			Technical Partners	Not available	–	12
			Broader economic inclusion stakeholders	Not available	–	283
			World Bank Global Practices	Not available	–	47
28	Percentage of Technical Partners engaged in PEI activities in current fiscal year	%	–	0	1	100%
29	Percentage of funders, Technical Partners, and World Bank staff who report PEI's work is useful to their work	%	–	0	At least 75%	76%

¹⁰ There may be some duplications of knowledge products disseminated, as some publications may be shared through different platforms.

PEI's Theory of Change



Key Assumptions

- Governments and World Bank operational teams are aware of PEI financing and technical support opportunities and request such support.
- Partners, affiliates, and World Bank agree on way forward (scale through government-led programs).
- Development policy and the strategies of control actors such as the World Bank and wider stakeholders support the shift toward building on systems to drive delivery of economic inclusion programs at scale.
- Existing economic inclusion government programs will serve as demonstration cases for other governments to take up and integrate into their programming and systems.
- Country contexts largely driven by evolving global megatrends and a strengthened body of evidence will underpin decisions by governments to scale up economic inclusion programs.
- A comprehensive suite of interventions has a greater and more sustained impact on income, assets, and wellbeing relative to stand-alone interventions.
- Economic inclusion programs, when integrated in government delivery systems, push for in-country coordination.

Individual Grants Status

Country	Grant Name	Grant Objectives	Innovations	Grant Amount	Activities	Status
Inaugural or Foundational Grantees						
Afghanistan	Evidence-based approach to ensuring success of economic inclusion programs in FCV settings in Afghanistan	Strengthen capacity in evidence-based decision-making for economic inclusion interventions in FCV settings through a combination of rigorous co-produced operational research with program implementers and structured support to help implementing partners translate this research into operational decisions. Direct beneficiaries = 12,698 households. Targeting the Ultra-Poor Pilot program established 2014 under the Afghanistan Access to Finance program. ¹	WEE, Displaced	\$180,000	Stocktaking analysis, capacity-building, strengthening M&E systems, learning	CLOSED The PEI-funded activities have helped produce significant additional research evaluating the impact of graduation programs in settings of multiple concurrent crises (pandemic, droughts, escalating violence). The research included an impact evaluation exploring seasonal dynamics and long-term impacts of graduation programs in fragile settings. The team also developed a women's empowerment research framework to measure gender equality and women's empowerment in the Targeting the Ultra-Poor context. The experience gained by the team will be used to develop and disseminate a toolkit for data collecting in FCV settings.
Bangladesh	Developing an Economic Inclusion Program through Social Safety Net Programs, Bangladesh	Design a sustainable economic inclusion program owned and implemented by the government of Bangladesh to help young adults in poor households improve their livelihoods. Direct beneficiaries = 125,000 households. The RAISE Program has been under implementation since 2021.	WEE, Urban, Youth, GRID	\$178,000	Stocktaking analysis, program design, learning	CLOSED The country team, with PEI support, was able to conduct a series of institutional and technical capacity assessments to government partners and provide technical assistance regarding the implementation of economic inclusion activities. The team engaged three different government entities including PKSF (Bangladesh's wholesale lending agency), the Local Government Division, and the Department of Social Services, with each entity implementing a different economic inclusion intervention.

¹ PEI grant funded activities are often advisory in nature, and beneficiary numbers reported throughout refer to the number of beneficiaries covered by the Economic Inclusion activities of the IDA financed program to which PEI provides grant funding and advisory support.

Country	Grant Name	Grant Objectives	Innovations	Grant Amount	Activities	Status
Egypt	Technical Assistance for Economic Inclusion/ Empowerment Pilot	<p>Complement the efficient and effective cash transfer program by introducing a new pilot program to support the Borrower to improve access to economic opportunities and pilot different productive inclusion models through wage and self-employment.</p> <p>Direct beneficiaries = 50,000 households. The Strengthening Social Safety Net Project has been under implementation since 2015.</p>	WEE, Urban, Youth	\$179,867	Stocktaking, program design, capacity-building, M&E systems, learning	<p>CLOSED</p> <p>The grant activities supported an economic inclusion pilot (FORSA) reaching 50,000 beneficiaries. The team conducted a series of diagnostic activities including a stocktaking exercise, a profiling analysis, and a market assessment, which informed the design of the pilot. The team also developed a Partnership Strategy document to guide stakeholder engagement and a Business Process Review to document the pilot's processes for the development of a future Management Information Systems module. PEI also supported the team in developing a behavioral change training module, which was delivered to 60,000 beneficiaries. Finally, a baseline survey was recently concluded, which will be used to evaluate the pilot upon its completion.</p>
Iraq	Capacity-Building for Design of Economic Inclusion	<p>Create more knowledge and awareness among Iraqi counterparts on the concept of economic inclusion programs and jointly develop a design for an economic inclusion pilot in Iraq.</p> <p>Direct beneficiaries = 2,200 households. The Protecting and Promoting Human Capital pilot program was established in 2022.</p>	Urban	\$178,800	Stocktaking, program design, capacity-building, learning	<p>ON TRACK – closing on November 30, 2022</p> <p>Team is in process of finalizing last two grant outputs, which are a local market analysis and a stakeholder and service mapping exercise. Along with the market analysis, the mapping seeks to identify primary and secondary stakeholders and service providers related to the sectors of analysis that beneficiaries can link to for livelihood support. Both analyses will inform the implementation of an upcoming economic inclusion pilot program.</p>
Madagascar	Economic Inclusion Pilot in Urban Areas	<p>Provide access to productive activities and economic inclusion to extremely poor households for the first time in urban areas of Madagascar following COVID-19.</p> <p>Direct beneficiaries = 2,000 households. This pilot program is part of the Additional Financing for COVID-19 Response under the Madagascar Social Safety Net Project (AF3) established in 2021.</p>	Urban	\$180,000	Program design, capacity-building, learning	<p>ON TRACK – closing on September 30, 2022</p> <p>Despite challenges related to a series of cyclones that hit Madagascar in early 2022, the team has managed substantial progress towards grant outputs. This includes a diagnostic on urban poverty and labor market outcomes to inform the design and implementation of productive inclusion activities under the IDA-funded Urban Safety Net Program. Furthermore, the team supported the implementing agency in identifying an appropriate package of support for productive inclusion beneficiaries - with the design being formalized in the implementation manual for the Urban Safety Net program.</p>

Country	Grant Name	Grant Objectives	Innovations	Grant Amount	Activities	Status
Malawi	Developing Innovative Economic Inclusion Programming for Ultra-Poor Households	Provide technical and operational support to government of Malawi to build economic inclusion implementation capacity and enhance the design of livelihoods packages for extremely poor households benefiting from Social Cash Transfer and Public Works Programs in Malawi. Direct beneficiaries = 70,000 households. The Social Support for Resilient Livelihoods Project has been under implementation since 2020.	GRID, Urban	\$180,000	Program design, capacity-building, strengthening M&E systems, learning	ON TRACK - closing on October 31, 2022 The team has procured a firm to support Community Savings and Investment Promotion, the lead implementing agency of the Social Support for Resilient Livelihoods Project's economic inclusion component, in reviewing its livelihoods training curriculum and materials; assessing the Livelihoods Management Information System; and development of draft livelihoods and graduation operational guidelines.
Mozambique	Operational Options for Poor Farmers' Economic Inclusion	Design operational options for the economic inclusion of poor subsistence farmers that are social protection beneficiaries into financially sustainable value chains. Direct beneficiaries = 721 households. The Moamba Income Generation Agricultural Pilot Project was established in 2021.	GRID, Displaced	\$180,000	Stocktaking, program design, capacity-building, strengthening M&E systems, learning	ON TRACK – closing on December 31, 2022 Despite delays due to COVID-19, the team began implementing: a market assessment of agricultural opportunities including climate adaptations (selection of more resilient crops). Furthermore, the team has held discussions with both Social Protection and Agricultural operations in an effort to harmonize interventions towards more effective inclusion of poor and vulnerable households in rural and peri-urban areas in targeted provinces.
Panama	Panama Productive Inclusion Program in Indigenous Territories	Strengthen the institutional capacity of the Ministry of Social Development in Panama to implement and improve the Cohesión Social Program. The Cohesión Social Program seeks to sustainably increase incomes among the poor indigenous population in Panama. Direct beneficiaries = 5,845 households. The Cohesion Social program pilot was established in 2016 with ambitions to scale.	WEE, Urban	\$240,000	Stocktaking, program design, strengthening M&E systems, learning	CLOSED The grant activities helped strengthen the institutional capacity of the Ministry of Social Development to implement and improve its productive inclusion intervention – Cohesión Social. The team organized a South-South exchange with Peru and Colombia for learning and knowledge exchange. To support implementation during COVID-19, the team developed contingency plans and a digital real-time monitoring system. PEI also supported the design and implementation of an impact evaluation exercise, which will facilitate the adoption of future economic inclusion programming in Panama.

Country	Grant Name	Grant Objectives	Innovations	Grant Amount	Activities	Status
Uzbekistan	Promoting Entrepreneurial Mindset and Skills in Uzbekistan	Inform the development and implementation of an intervention focused on entrepreneurship to foster the economic inclusion of vulnerable groups (ultra-poor and specific vulnerable groups such as youth and women). Direct beneficiaries = 15,000 households. The Strengthening the Social Protection System Project has been under implementation since 2020.	Urban	\$180,000	Stocktaking, program design, learning	ON TRACK – closing on October 31, 2022 The team has made substantial progress towards finalizing outputs. Using a rapid mapping exercise as well as key informant interviews, the team is finalizing a stocktaking of economic inclusion and entrepreneurship support programs. Furthermore, the team is in the process of analyzing its phone survey data, which will feed a policy note on best practices in implementing training programs.
Zambia	Developing Sustainable Livelihood through Value Chain Linkages	Provide technical and operational support to government of Republic of Zambia to develop operational techniques to enable growth of women-led household and micro enterprises in poor communities to move from “survival mode” to “opportunity mode” through upstream value chain linkages. Direct beneficiaries = 96,000 households. The Girls Education and Women’s Empowerment and Livelihood Project has been under implementation since 2015.	WEE, Urban	\$180,000	Stocktaking, program design, capacity-building, learning	ON TRACK – closing on September 30, 2022 The team is finalizing the necessary inputs to inform operational guidelines for establishing value chain linkages for beneficiaries of the Supporting Women’s Livelihood component. These guidelines will inform the implementation of the value chain linkages pilot. To this end, the following documents have been prepared: a livelihood assessment report, value chain fact sheets, a summary of value chain business models, and a draft operational manual.
COVID-19 Recovery - Round 2 Grantees						
Angola	Empowering Angolan Women	Inform the design of economic inclusion interventions to empower poor young Angolan women in urban and peri-urban areas. Direct beneficiaries = 16,924 households. The Strengthening the National Social Protection System Project has been under implementation since 2020.	WEE, Urban, Youth	\$250,000	Stocktaking analysis, program design	ON TRACK The team has made progress on its first output – a stocktaking analysis of constraints faced by women and girls receiving cash transfers in urban and peri urban areas.
Benin	Enhancing Youth Economic Inclusion and Women’s Empowerment	Support the government of Benin (i) to increase learning on women’s empowerment to advance the economic inclusion agenda and (ii) to introduce gender-responsive innovations in its national economic inclusion program as well as strengthen its capacities to deliver the Azoli program. Direct beneficiaries = 30,000 households. The Benin Youth Inclusion Project was established in 2020.	WEE, Urban, Youth, GRID	\$250,000	Program design, capacity-building, learning	ON TRACK In coordination with the ANPE (National Employment Agency), the team is in the process of contracting a firm to produce several qualitative studies aimed at deepening the understanding of women’s empowerment challenges and the constraints to accessing markets and wage employment.

Country	Grant Name	Grant Objectives	Innovations	Grant Amount	Activities	Status
Cameroon	Innovations for the Economic Inclusion of Urban Youth in the COVID-19 Context	<p>Support the development of innovations for the economic inclusion of young informal sector workers in urban areas of Cameroon. With a focus on the COVID-19 context, the Grant aims to contribute to current efforts to improve youths' income-generating capacity and their resilience to shocks.</p> <p>Direct beneficiaries = 67,000 households. The Cameroon Social Safety Nets Project was established in 2013.</p>	WEE, Urban, Youth	\$250,000	Program design, stocktaking	<p>ON TRACK</p> <p>The majority of outputs are underway. A consultant has been recruited to provide technical advice on the feasibility of developing an innovative targeting system. The team is also preparing to launch a mapping exercise to determine the availability of financial and other relevant services at the village and neighborhood level, to assess the feasibility of digital payments and a choice-based model in each project location. And finally, a market assessment is underway to identify entrepreneurship opportunities for disadvantaged youth.</p>
Djibouti	Djibouti Productive Inclusion Program	<p>Support the technical and institutional capacity of the Ministry of Solidarity and Social Affairs in developing and launching implementation of a new productive inclusion program.</p> <p>Direct beneficiaries: <i>To be determined next reporting period.</i></p>	Youth	\$210,000	Stocktaking, capacity-building, learning	<p>ON TRACK</p> <p>Although impacted by COVID-19 and the food security crisis, the team has made steady progress toward grant outputs. Under the first component, the team has hired two consultants to support a stocktaking analysis detailing experiences from previous productive inclusion pilots, analysis of the informal sector, and COVID-19 implications for productive inclusion. The forthcoming analysis will directly inform a graduation strategy for the country.</p>
Democratic Republic of Congo	Economic Inclusion for Refugees Pilot	<p>Inform the design of an economic inclusion program that responds to the specific needs and vulnerabilities of refugees that are STEP (DRC Eastern Recovery Project -P145196) beneficiaries.</p> <p>Direct beneficiaries = 88,151 households. The DRC Eastern Recovery Project was established in 2014.</p>	WEE, Displaced, GRID	\$250,000	Stocktaking, program design, capacity-building, learning	<p>ON TRACK</p> <p>Three consultants have been hired to conduct a stocktaking analysis of international best practices for productive inclusion programs in DRC and other FCV settings with a focus on refugees and women. Furthermore, the team has focused on providing technical assistance for the development of the productive inclusion training curriculum to the DRC Social Fund, STEP's implementing entity.</p>

Country	Grant Name	Grant Objectives	Innovations	Grant Amount	Activities	Status
Fiji	Scaling Up Gender-Sensitive Economic Inclusion Programs for Green, Resilient, and Inclusive Development in Fiji	Carry out analytical and advisory activities to inform the government of Fiji's efforts in recovering from COVID-19 by scaling up gender-sensitive economic inclusion programs for green, resilient, and inclusive development in Fiji. This will contribute to the objectives of ASA which supports adaptive and gender-smart social protection. Direct beneficiaries: <i>To be detailed next reporting period.</i>	GRID, WEE	\$250,000	Stocktaking, program design, capacity-building, learning	ON TRACK The team has been working closely with several ministries and partners in designing a gender-sensitive economic inclusion framework. In doing so, the team has begun drafting a diagnostic report, which will review the experience of the Welfare Graduation Program (WGP) between 2009 and 2015 and proposed a framework for reviving the WGP in 2022. At the same time, the team has begun recruiting a firm to develop and implement an economic inclusion pilot.
Ghana	Facilitating the Expansion of Productive Inclusion Activities to Urban Areas of Ghana	Carry out analytical and advisory activities to inform the government of Ghana's expansion of Productive Inclusion activities to urban areas. This accords with the Ghana Productive Safety Net Project 2 (P175588) PDO "to expand and enhance social safety nets that improve the incomes and productivity of the poor in Ghana." Direct beneficiaries = 10,000 households. The Ghana Productive Safety Net Project 2 was established in 2019.	GRID, Urban	\$250,000	Stocktaking, program design, M&E strengthening activities	ON TRACK A research firm has been contracted to conduct a needs assessment of prospective beneficiaries in urban areas of five regions in Ghana. This data will be used to draw an appropriate sample of target beneficiaries for economic inclusion programming in urban areas.
Indonesia	Urban Regeneration and Economic Inclusion in Indonesia	Develop methodologies and tools to support the integration of appropriate economic inclusion strategies into the design and implementation of urban regeneration strategies. Direct beneficiaries: <i>To be detailed next reporting period.</i>	GRID, Urban	\$180,000	Stocktaking, capacity-building, learning	ON TRACK Progress has been made on the dialogue with the national government to ensure support for integrated urban regeneration strategies. In parallel, Grant activities have focused on coordination between the Urban and Social Protection and Jobs teams, a market assessment to inform the development of economic inclusion activities, and development of a first draft of tools and questionnaires for area-based socioeconomic profiling of workers and households. This work is expected to inform the preparation of further pipeline operations in the Urban sector, so that they can better include an economic inclusion approach in the design of future projects.

Country	Grant Name	Grant Objectives	Innovations	Grant Amount	Activities	Status
Madagascar	Support for Resilient Livelihoods in the South of Madagascar	Support the government of Madagascar in developing diagnostics, reviews, and evidence-based policies to shape the design and targeting of a component on resilient livelihoods under the Support to Resilient Livelihoods in the South of Madagascar Project (P171056). Direct beneficiaries = 98,000 households. The MIONJO project was established in 2021.	GRID	\$250,000	Stocktaking, program design, learning	ON TRACK Despite delays due to COVID-19 and drought conditions, initial diagnostic activities have been completed including (i) a baseline GIS map with basic infrastructure and livelihood sector analysis; (ii) a review of existing livelihood programs; and (iii) a review of livelihood graduation models to assess their applicability to the Madagascar content. Based on these outputs, two consultants have been hired to support government counterparts in implementing the livelihood subcomponent of the IDA-financed parent project.
Uganda	Assessing Economic Inclusion Interventions in Northern Uganda	Assess the effectiveness of the models for economic inclusion interventions to increase income and assets and build resilience among extremely poor and vulnerable households in Northern Uganda. Direct beneficiaries: <i>To be detailed next reporting period as the design for the new operation is finalized.</i>	WEE	\$250,000	Stocktaking, program design, M&E, learning	ON TRACK Progress has been made across all outputs. The team is currently supporting the government in procuring a firm to carry out several diagnostics of economic inclusion interventions. In addition, the team has successfully organized a series of consultation meetings across various ministries focusing on scaling up the economic inclusion component of Northern Uganda Social Action Fund 3.

Financial Highlights

As of June 30, 2022, development partner contributions to the Partnership for Economic Inclusion Multi-Donor Trust Fund (PEI MDTF) totaled \$12.11 million. The table below presents the status of paid and unpaid contributions by development partners. These contributions represent the amounts specified in the administrative agreements.

Development Partner	Contribution Currency	Signed (Contribution Currency)	Amount Received (US\$, Millions)	Unpaid Installments (US\$, Millions)	Total (US\$, Millions)
New Venture Fund	Million \$	4.00	4.00	0.00	4.00
Germany-Deutsche Gesellschaft für Internationale Zusammenarbeit (GIZ)	Million €	5.90	6.84	0.00	6.84
BRAC USA, Inc	Million \$	0.50	0.50	0.00	0.50
Ireland - Minister for Foreign Affairs/ Irish Aid	Million €	0.25	0.77	0.00	0.77
Total paid and unpaid contributions			12.11	0.00	12.11

After announcing the results of the first country engagement call for proposals launched on July 9, 2019, and the allocation of the first and second tranches of the approved grants between October 2019 and March 2020, the grant implementation period began, with some delays stemming from the COVID-19 pandemic, leading to increasing disbursement levels, including for those grants approved during cohort 2 during 2021, resulting in higher disbursements than expected for fiscal 2022.

The table below presents the financial summary for the PEI MDTF, including information on the status of donor contributions, investment income, grant commitments and disbursements, and funds available for future allocations.

Description	Inception June 30, 2019	July 1, 2019- June 30, 2020	July 1, 2020- June 30, 2021	July 1, 2021- June 30, 2022	Cumulative up to June 30, 2022
Signed contributions (US\$ equivalent)					
Total signed contributions	7,169,670.40	500,000	3,164,145	1,271,480	12,105,296
Unpaid contributions	3,000,000	1,750,000	545,050	–	–
Receipts (US\$ equivalent)					
Contributions paid in	4,169,670	1,750,000	4,369,095	1,816,529.70	12,105,296
Investment income	24,626	78,898	18,486	10,959	132,970
Total receipts	4,194,297	1,828,898	4,387,581	1,827,489	12,238,265
Disbursements (US\$ equivalent)					
Grant disbursements	–	1,119,622	2,263,700	2,931,158	6,314,480
Program management	137,041	257,107	126,488	178,468	699,104
Total disbursements	137,041	1,376,729	2,390,188	3,109,626	7,013,584

Description	Inception June 30, 2019	July 1, 2019- June 30, 2020	July 1, 2020- June 30, 2021	July 1, 2021- June 30, 2022	Cumulative up to June 30, 2022
Trust fund cash balance (US\$ equivalent)		452,169			
Grant committed amounts		4,044,800	2,421,000		10,128,941
Grant allocations		3,505,760	2,529,000		8,772,901
Available balance for new programming^(a) (US\$ equivalent)		n.a.	n.a.		3,465,364

(a) As of June 30, 2022 \$1.36 million in approved grants is still pending transfer/allocation; thus, \$2.11 million will be the available budget in light of the pending allocations expected this fiscal 2023.

Source: SAP (World Bank internal system)

Notes: In accordance with the Trust Fund Administrative Agreement (see annex 2, para.3.3), “the Bank shall provide to the Donors via the Development Partner Center website, within six (6) months following the end of each Bank fiscal year, an annual single audit report, comprising (1) a management report together with an audit opinion from the Bank’s external auditors concerning the adequacy of internal control over cash-based financial reporting for all cash-based trust funds as a whole; and (2) a combined financial statement for all cash-based trust funds together with the Bank’s external auditor’s opinion thereon.” Details may not sum to totals because of rounding. n.a. = not applicable.

Disbursements as of June 30, 2022

PEI budget expenditure was generally on track for the year, with actual expenditure of \$3.1 million compared to an estimated budget of \$2.8 million.

Under Pillar 1, Country Engagement activities reached total actual disbursements of \$1.5 million, representing 75 percent of the indicative budget. This reflects a big increase in disbursements following the impact of COVID-19, which resulted in grant

implementation delays due to in-country movement restrictions and other pandemic mitigation measures. By the end of quarter 4, grant expenditure was increasing, with increased utilization anticipated for the remainder of the calendar year.

Under Pillar 2, Innovation and Learning, actual disbursements totaled \$0.57 million, representing 219 percent of the indicative budget. These actual disbursements were linked to

a scale-up of efforts, benefiting also from additional budget contributions to the MDTF. The expenditure reflects efforts to share and disseminate new knowledge products including PEI Insight, PEI In Practice, and to launch the impact collaboration efforts including our first in-person global event during the COVID-19 pandemic.

Under Pillar 3, Global Knowledge, actual disbursements totaled \$0.87 million, representing 173 percent of the indicative budget. These disbursements reflect broad dissemination, social outreach, and communication strategies to enable the global learning and evidence agenda. An ongoing budget challenge is the overlaps in staffing costs across pillars, making it difficult to assign clear staffing charges among them.

FY22 and Cumulative PEI Trust Fund Disbursements

Code	FY22 Indicative Budget (US\$)	FY22 Actuals as of June 30, 2022 (US\$)	FY22 Indicative Budget Utilization (%)	Cumulative Disbursements Since Inception (US\$)
Program Management/Admin	70,000	178,468	255	699,103.97
Staff time	70,000	162,850		471,702.51
STCs				155,617.46
Travel		1,402		37,432.44
Other program expenses		8,469		34,351.56
Pillar 1: Country Engagement	2,000,000	1,497,309	75	3,023,631.96
Staff time*	210,000	304,772		659,064.02
STCs	190,000	245,053		587,856.91
Travel	15,000	1,050		5,628.56


Code	FY22 Indicative Budget (US\$)	FY22 Actuals as of June 30, 2022 (US\$)	FY22 Indicative Budget Utilization (%)	Cumulative Disbursements Since Inception (US\$)
Grants CFP1/CFP2	1,500,000	945,250		1,769,899.47
Small Country Grants	60,000			
Events/Other program expenses	25,000	1,183		1,183.00
Pillar 2: Innovation and Learning	260,000	568,631	219	989,670.83
Staff time*	150,000	43,431		229,464.11
STCs	100,000	282,448		484,905.30
Travel	10,000	71,234		71,234.08
Other Program Expenses		171,517		204,067.34
Pillar 3: Global Knowledge	500,000	865,218	173	2,301,176.58
Staff time*	150,000	157,493		443,311.13
STCs	250,000	649,160		1,513,754.88
Travel		1,585		1,585.37
Events	100,000			90,432.25
Other program expenses		56,979		252,092.95
Total	2,830,000	3,109,626	110	7,013,583

Source: SAP (World Bank internal system)

*Staff time includes Extended-Term Consultants.

Abbreviations

ANPE	National Employment Agency (Benin)	LMA	Localized Market Assessment
CFP	Call for Proposals	M&E	Monitoring and Evaluation
CGD	Center for Global Development	MDTF	Multi-Donor Trust Fund
CSO	Civil Society Organization	MEL	Monitoring, Evaluation, and Learning
DIME	Development Impact Evaluation	NGO	Non-Governmental Organization
DRC	Democratic Republic of Congo	PEI	Partnership for Economic Inclusion
FCV	Fragile, Conflict, or Violence	PKSF	Palli Karma Sahayak Foundation
FY	Fiscal Year	STC	Short-Term Consultant
FAO	Food and Agricultural Organization of the United Nations	STEP	DRC Eastern Recovery Project
GRID	Green, Resilient, Inclusive Development	TOC	Theory of Change
I&L	Innovation and Learning	UN	United Nations
IBRD	International Bank for Reconstruction and Development countries	UNHCR	United Nations High Commissioner for Refugees
IDA	International Development Association	WEE	Women's Economic Empowerment
IPCC	Intergovernmental Panel on Climate Change	WGP	Welfare Graduation Program



The Partnership for Economic Inclusion (PEI) is a global partnership with a mission to support the adoption of national economic inclusion programs that increase the earnings and assets of extremely poor and vulnerable households. PEI brings together global stakeholders to catalyze country-level innovation, advance innovation and learning and share global knowledge. PEI is hosted by the Social Protection and Jobs Global Practice (SPJ) of the World Bank.

