



March 2023



Photo credit: World Bank 2016

NEWS AND RESOURCES FROM PEI

Last call: Submit your Economic Inclusion program to PEI Landscape Survey by April 21!



Did you miss the 2023 Landscape Survey of Economic Inclusion Programs? It's not too late!

Complete [this survey](#) if your program is currently under operation and targets the extreme poor and/or vulnerable people, provides an integrated package of services, aims to increase the assets and income of participants and has strong national commitment/vision. The results will inform The State of Economic Inclusion Report 2024 and other learning efforts.

The deadline for submission is April 21st. Available in English, French and Spanish.

[Take the survey](#)

PEI Open House x Seminar Series on Aging and Longevity is now available

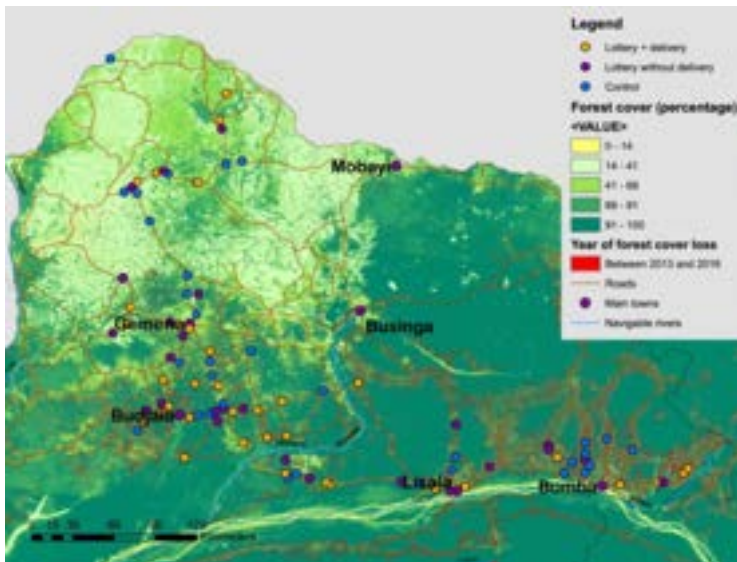


On March 16, PEI co-hosted an event with the Seminar Series on Aging and Longevity by the World Bank [Societal Aging](#) group.

The session convened representatives from the Government of Peru, NGO Help Age, and the Social Protection and Jobs World Bank Global Practice to explore ways in which economic inclusion approaches address the socioeconomic needs of older adults.

[Watch the recording and get the materials >](#)

Impact of small farmers' access to improved seeds and deforestation in DR Congo



Since the 1960s, the increased availability of modern seed varieties in developing countries has had large positive effects on households' well-being. However, the effect of related land use changes on deforestation and biodiversity is ambiguous.

This study, published in Nature Communications, examines this question through a randomized control trial in a remote area in the Congo Basin rainforest with weak input and output markets.

[Read more >](#)

Bundled interventions for sustained poverty reduction won't work without profitable investments



Photo Credit: Mohammad Al-Arief/The World Bank.

Social protection programs are increasingly designed to drive sustainable pathways out of poverty by investing targeted transfers in businesses run by poor households. An important next step in this research agenda is understanding which components of the bundle are necessary for generating large benefits or what other components might be added or incorporated into the next generation of these productive inclusion or adaptive social protection programs, such as cognitive behavioral therapy.

[Read more >](#)

Next Up on Open House



Save the date! PEI's next Open House webinar will take place **April 25 from 9:30a - 11a ET**. Our guests will discuss adaptive social protection and productive inclusion in the Sahel. Stay tuned for your invitation.

The Latest In Practice



PEI's latest In Practice volume and brief, authored by four NGOs from across the global South, unpack the design and delivery of government-led Graduation programs for people in extreme poverty.

[Read more >](#)

NEWS AND RESOURCES FROM PEI PARTNERS



Photo Credit: Village Enterprise

Women Leading Change: Bellancile's Story

Bellancile's business, a retail shop that she launched with two other women in Butare, has not just changed her life—it's also changed the lives of her six children, her husband, and her business partners. Since opening their doors to customers, their retail shop is now valued at \$600 USD—a 233% increase in just six months. Read Bellancile's story to learn how she plans to diversify her business and pave the way for others in her community.

[Keep reading >](#)



Photo credit: Fundación Capital

When technology becomes women's ally

How to promote sustainable ways to overcome extreme poverty in households? This question took Fundación Capital to Brazil where, since 2021, they have accompanied the implementation of *Prospera Familia*, an economic inclusion program led by the Government of the State of São Paulo which, inspired by the Graduation approach, is organized under three pillars: financial support, coaching and professional guidance.

[Keep reading >](#)



Photo credit: Debajyoti Chakraborty/NurPhoto

How Governments Can Reach Those Furthest Behind First

In this note, Claire Hutchings explores the importance of reaching those furthest behind. "Ensuring that poverty-alleviation initiatives reach those most in need has been slow and difficult in most developing countries. But if governments make the most of existing data and systems, carry out multidimensional local assessments, and commit to continuous improvement of targeting methods, progress is possible."

[Keep reading >](#)



Photo credit: IPA

[Resources] New Directions in Anti-Poverty Research Conference

Innovations for Poverty Action, the Trinity Impact Evaluation Unit, the Gender Innovation Lab at the World Bank, and Concern Worldwide hosted a two-day conference on the latest findings in research on multifaceted anti-poverty programs. The conference highlighted research on anti-poverty programming with innovations targeting mental wellbeing, gender, household risk and resilience, climate and environmental outcomes.

[Find the conference's resources, including PEI's presentation >](#)



Photo credit: Mercy Corps

Year one of DREAMS: A new model for building opportunity

“The program has brought unity in our community, since we all work together as one.” Village Enterprise and Mercy Corps have combined their respective poverty graduation and market systems development approaches to better support refugees in DREAMS (Delivering Resilient Enterprises and Market Systems). This photo essay from Mercy Corps looks back on the first year of DREAMS in Uganda.

[Read more >](#)



Photo credit: AVSI

[Upcoming Event] Transitioning from Graduation to Resilience

As part of USAID's Agency Learning and Evidence month, a virtual event will be held on **April 13th 2023 from 10:00 am-12:00 pm EST**. The event will be hosted by *Graduating to Resilience*, a 7-year USAID Bureau for Humanitarian Assistance-funded Activity led by AVSI Foundation in partnership with American Institutes for Research and Trickle Up. The Activity seeks to test the ability of the Graduation Approach to graduate 13,200 extremely poor refugee and host community households (across two cohorts) from food insecurity and fragile livelihoods to self-reliance and resilience.

[Join this event on April 13 >](#)



Photo credit: AVSI Foundation

The Dilemma of Consumption Support

While consumption support makes a significant contribution to meeting households' food needs, the process of delivery and sensitization for participants and neighbors remains critical as these can exacerbate conflict in communities. The needs and benefits of consumption support greatly outweigh the negative impacts, however it imperative to recognize and understand potential consequences of large influxes of cash into communities especially as regards to potential changes in social networks and relationships.

[Read more here >](#)

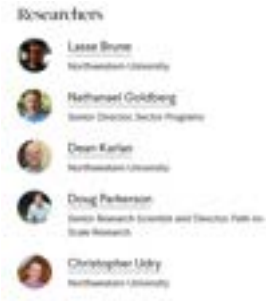


Photo credit: IPA

The Impact of a Graduation Program on Livelihoods in Refugee and Host Communities in Uganda

In Uganda, researchers worked with Innovations for Poverty Action to conduct a randomized evaluation to better understand the effectiveness of several variants of a Graduation program focused on improving nutrition and self-reliance among populations in and around a refugee settlement. The program had significant positive impacts for both program participants and their households on key outcomes, including food security, nutrition, and self-reliance. All variations of the program also had large positive returns on investment.

[Keep reading here >](#)

About PEI

Get the latest articles, research, ideas, and events by PEI, our partners, and colleagues

[Join us on Twitter](#)
and catch up with our [PEI Open House Events series here.](#)



The [Partnership for Economic Inclusion](#) is a global network that includes national governments, policymakers, development partners, and nongovernmental and research organizations. PEI is hosted by the World Bank's Social Protection and Jobs Global Practice and seeks to formalize partnerships now that will solidify an economic inclusion network that is global and far-reaching. PEI partners help develop economic inclusion programs and contribute to evidence-based good practices that can be adapted to local conditions by governments and local or international agencies. Through their work, each partner is helping build a platform that will refine and enable the sharing of cutting-edge knowledge about what works in economic inclusion.



Subscribe to our newsletter [here](#)

Partnership for Economic Inclusion c/o World Bank Group 1818 H Street, N.W.
MSN G8-800 . Washington, DC 20433

[Unsubscribe from this list](#)

Privacy Policy

The content in this E-bulletin is copyrighted. Requests to reproduce it, in whole or in part, should be addressed to peimt@worldbank.org. For more information visit our website: <https://www.peiglobal.org>