



November 2022



Photo credit: Vincent Tremeau / World Bank

NEWS AND RESOURCES FROM PEI

What Impact Did the Partnership for Economic Inclusion Make in 2022?



During a period of significant global challenge, PEI delivered impactful results. PEI's [2022 Annual Report](#) looks at progress across our country engagement, evidence, and partnership activities. And, for the first time, it presents findings from our new Results Framework and reports on impressive feedback from stakeholders. Thank you for your support.

[Download the report](#)

Country Results Stories

Curious to learn how PEI supports country



operations? Check out our new Results Stories from [Bangladesh](#), [Egypt](#), [Panama](#), and [Zambia](#) to learn how countries and partners are moving the agenda towards scaling up economic inclusion for the poorest and most vulnerable forward with PEI's support.

PEI Welcomes New Technical Partner: ideas42

A diverse and broad partnership network representing a depth of relevant expertise is critical to PEI's work at the country, learning, and evidence-generation levels.

In October, PEI expanded our formal Technical Partner base with the addition of [ideas42](#). Ideas42's collaborations with PEI have already resulted in outputs such as the [In Practice publication](#) linking Behavioral Science to Economic Inclusion programming.



Register for the next PEI Open House on Scalable Coaching Approaches for EI

PEI Open House
Dec 8 | 9:30 - 11:00 am ET

Scalable Coaching Approaches for Economic Inclusion Programs

Simultaneous interpretation will be available in Arabic, French, Portuguese and Spanish.

Carlos Figueroa
Head of Mgmt., Productive Projects Unit
FONCODES, Peru

Kaushik Roy
State Program Manager - Jharkhand
Trickle Up, India

Claudine Nyinawagaga
Director General
LODA, Rwanda

Keetie Roelen
PEI Advisory Council Member and Co-Director, Centre for SP
IDS, United Kingdom

Janet Heisey
Consultant
PEI, World Bank

Nearly 90 percent of economic inclusion programs include coaching or mentoring as one of their core components, as a key element to build skills, foster changes in attitudes and social norms, and monitor progress in beneficiary wellbeing.

But how can this be done as we scale up these programs? Does increasing coverage come at the expense of quality control?

[Join us for our next PEI Open House on Coaching](#) to learn from experiences in Peru and Rwanda, and from NGO Trickle Up in India.

NEWS AND RESOURCES FROM PEI PARTNERS

Sowing Seeds of Change: Graduation Stories



Photo source: Fundación Capital

Since 2011 Fundación Capital has been implementing and innovating with Graduation programs in Latin America and Africa, seeking to expand family opportunities through robust and scalable economic inclusion systems. In this series of podcasts, you can listen to seven inspiring and moving life stories as participants from the programs narrate their experiences through their Graduation stories from Paraguay, Honduras, and Colombia.

[Read more in the article here>](#)

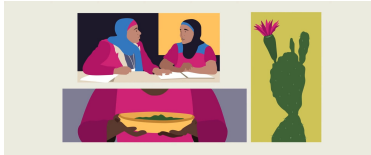


Photo source: BRAC

Climate Adaptation Must Include Women in Extreme Poverty: Lessons from Tunisia

An integrated approach to climate, gender, and poverty that addresses the needs of marginalized populations while building resilient systems is essential. The Government of Tunisia offers lessons for implementing such an approach to including and empowering women in extreme poverty and climate adaptation efforts.

[Explore more>](#)

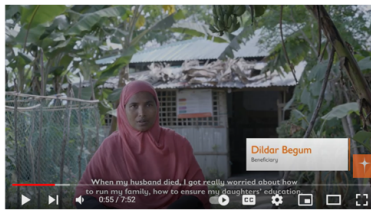


Photo source: WVI

Word Vision GOP Project Empowering Women

World Vision's Gender Inclusive Pathways Out of Poverty (GOP) project is a livelihoods initiative with ultra-poor households in climate vulnerable communities in Ukhiya and Teknaf sub-districts of Cox's Bazar, Bangladesh. The project is supported by the Australian Government through the Australian NGO Cooperation Program (ANCP). Explore more in this encouraging short video.

[Watch the video>](#)

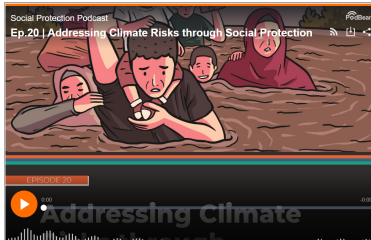


Photo credit: Socialprotection.org

Addressing Climate Risks through Social Protection

Listen to this new podcast from Social Protection on how can social protection help address the risks posed by climate change today and in the future. To bring the issue into perspective, experts on the matter reflect on both climate adaptation and mitigation, focusing on possible pathways for environmental restoration and nature-based solutions, as well as an equitable transition towards a post-carbon economy.

[Listen to the podcast here>](#)

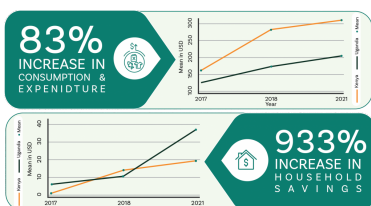


Photo Source: Village Enterprise

Results from the Village Enterprise Five-Year Longitudinal Study

Results from Village Enterprise's recent longitudinal study, of more than 400 entrepreneurs who had previously graduated from our program in Kenya and Uganda between July 2017 and June 2018, revealed an 83% increase in consumption and a 933% increase in savings for entrepreneurs over five years.

[Keep reading here the full study>](#)



Photo credit: BRAC/2021

How to Get on Track to Eradicate Extreme Poverty

BRAC Ultra-poor Graduation approach's impact goes well beyond that of the individual participant. Not only does the household greatly benefit from its various interventions, but now studies show subsequent generations are able to stay out of the poverty trap. Gregory Chen is Managing Director of BRAC's Ultra-Poor Graduation Initiative, shares his insights.

[Read the full note here>](#)

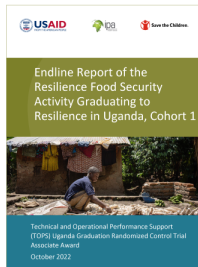


Photo credit: Report cover

Endline Report of the Resilience Food Security Activity Graduating to Resilience in Uganda, Cohort 1

In Uganda, researchers worked with Innovations for Poverty Action to conduct a randomized evaluation to understand better the effectiveness of several variants of a graduation program focused on improving nutrition and self-reliance among populations in and around a refugee settlement. The activity had significant positive impacts on key outcomes for both participants and their households, including food security, nutrition, and self-reliance. All variations of the program also had large positive returns on investment.

[Read more here>](#)



Photo source: Jaynerose Gacheri, Standard

How Couples' Training Brought Peace and Progress to Pokot Homes

This article in Kenya's The Standard looks at how the lives of three women have changed now that they have started their own climate-smart businesses through the Women Economic Empowerment - Climate-Smart Agriculture project from UN Women, FAO, and Village Enterprise.

[Read the full note here>](#)



Photo credit: Cartier / Andrea Borgarello

Devex: To Build Sustainable Livelihoods, There's No One-Size-Fits-All Approach

This visual story from Devex features an interview with Winnie Auma, Chief Program Officer at Village Enterprise, as it looks at the importance of women's economic empowerment and approaches to building sustainable livelihoods from Village Enterprise, WomenForWomen, and Kheyti.

[Read here>](#)

About PEI

Get the latest articles, research, ideas, and events by PEI, our partners, and colleagues. [Join us on Twitter](#) and catch up with our [webinars here](#).



The [Partnership for Economic Inclusion](#) is a global network that includes national governments, policymakers, development partners, and nongovernmental and research organizations. PEI is hosted by the World Bank's Social Protection and Jobs Global Practice and seeks to formalize partnerships now that will solidify an economic inclusion network that is global and far-reaching. PEI partners help develop economic inclusion programs and contribute to evidence-based good practices that can be adapted to local conditions by governments and local or international agencies. Through their work, each partner is helping build a platform that will refine and enable the sharing of cutting-edge knowledge about what works in economic inclusion.



Subscribe to our newsletter [here](#)

Partnership for Economic Inclusion c/o World Bank Group 1818 H Street, N.W.
 MSN G8-800 . Washington, DC 20433

[Unsubscribe from this list](#)

Privacy Policy

The content in this E-bulletin is copyrighted. Requests to reproduce it, in whole or in part, should be addressed to peimt@worldbank.org. For more information visit our website: <https://www.peiglobal.org>